

**UNIVERSITY OF HOUSTON**

**FY 2013**

**PLANNING AND BUDGETING GUIDE**



**June 2012**

University of Houston  
 FY2013 Planning and Budgeting Guide

Table of Contents

1.	<b>Planning and Budgeting Memorandums</b> Vice President’s Memorandum FY2013 Planning & Budgeting Guidelines ..... Provost Memorandum: Academic Affairs FY2013 Guidelines .....	 4 7
2.	<b>Formula Funding from the State of Texas</b> Appropriations FY2012/13 compared to 2010/11 ..... Elements of Formula Funding..... Base Period Semester Credit Hour Trends.....	 12 13 14
3.	<b>Budget Development Process</b> Flowchart ..... Calendar ..... Executive Overview..... Budget Guidelines..... Budget Principles ..... Merit Increase Guidelines .....	 20 21 22 23 26 27
4.	<b>Budget Training</b> Budget Training Memo ..... Budget Training web links to Budget Training Guide .....	 30 31
5.	<b>Appendices</b> University of Houston Mission and Goals ..... Glossary of Budgeting Terms ..... Full-Time Equivalent Position Definitions ..... Standard Work Hours/week for Part-time Faculty..... Employer Matching Rate for Estimate of Benefit Costs ..... Health Premium Rates and Contributions ..... FY2012 Non-Health Insurance Rates ..... FY2012 Health Insurance Rates ..... FY2013 Endowment Income ..... FY2013 Research Allocations ..... FY2013 IDC Allocations ..... FY2013 SSF Allocations ..... Contact List .....	 34 35 38 39 40 41 42 43 46 59 60 61 62

**Planning and Budgeting Memorandums**



UNIVERSITY OF HOUSTON SYSTEM  
UNIVERSITY OF HOUSTON

RENU KHATOR  
Chancellor and President

**MEMORANDUM**

**Date:** March 1, 2012

**To:** William Staples, President, UH-Clear Lake  
William Flores, President, UH-Downtown  
Philip Castille, President, UH-Victoria

**From:** Renu Khator *RenuKhator*

**Re:** **FY 2013 Planning Guidelines**

---

On May 16, the UH System universities will present their FY 2013 plans and budgets to the Board of Regents for consideration. Through this memorandum, I wish to convey my expectations for the planning component of these presentations. Your planning presentation should include the following:

- Institutional mission and goals
- Executive summary of your instructional and support budget, identifying changes from FY12 to FY13
- Overview of your FY13 plan and the process through which it was developed
- Detailed explanation of the initiatives through which you will pursue the UH System's three goals of student success, national competitiveness, and community advancement, plus the investments you will make in university infrastructure and administration
- Bridge tables that summarize university investments of new resources and HEAF
- Summary of Reallocations and Operating Efficiencies

For each of the goal areas you should include the following sections. Each goal area should be described in one to three pages.

#### Context

In this section you should explain the importance of the goal in relation to your university. You should also evaluate the success of strategies taken in recent years to achieve the goal in relation to moving the needle on progress card measures, citing data from your progress cards where appropriate.

#### FY 2013 Initiatives

In this section you should identify the major initiatives you will undertake in FY13 to achieve the goal and fund either through new resources (e.g., new tuition and fees, existing resources reallocated to fund new initiatives) or HEAF. Each initiative should be described in one to two paragraphs, including the dollars that will be allocated to the initiative, the source of funds (i.e., new resources, HEAF) and a description of expected outcomes.

#### Investment of Resources in FY 2013 Initiatives

This section should be a table summarizing the initiatives in which you will invest in FY13. The table should include the name of the initiative, the amount invested and the source of funds (i.e., new resources, HEAF).

The final component of your plan should be two bridge tables that summarize the ways in which new resources and HEAF are being applied (as described in the *FY 2013 Initiatives* section of your plan). These tables should reconcile with the individual “Investment of Resources in FY13 Initiatives” tables for each UHS goal. They will also provide the link between your plan and your budget presentation.

#### New Resources

In March, the Board of Regents will meet to set tuition and fee rates for next year. At this point, in the interest of affordability, we are committed to no tuition increases for undergraduate students. However, we will consider increases to fees for undergraduates if they have been approved by your students. We will also consider moderate increases to graduate tuition and fees. Given these limitations, when we use the term “new resources” in the context of this planning process, we must define it broadly to include (1) new tuition and fee dollars generated from enrollment growth, (2) existing resources reallocated to fund new initiatives, and (3) identification of operating efficiencies that reduce costs and allow existing resources to be redirected to higher priorities. As we look to the future, these are essential ways in which we will fund new initiatives.

#### Summary of Reallocations and Operating Efficiencies

To the extent that you will implement reallocations and operating efficiencies to fund new initiatives as part of your plan, please provide a one-page description of these reallocations and efficiencies, including their dollar value and prior use of funds. Doing so will demonstrate our commitment to placing existing resources to their best possible

use. Also, as we have done in past years, the resources generated through reallocation and operating efficiencies should be included on your bridge table (Appendix A) as a positive revenue change.

Executive Summary of All-Funds Instructional and Support Budget

For the first time last year, we included an executive summary of the universities' instructional and support budgets (i.e., use of funding from tuition and fees and state general revenue) as part of our planning presentations. Doing so provided the regents with a valuable overview of how we invest our most fungible resources to accomplish institutional goals. A template will be forwarded to you electronically for completing the executive summary again this year.

By Wednesday, March 28, a draft of your planning materials should be submitted to Chris Stanich. The following week we will hold planning hearings, so I can provide you with input before the plans are finalized and submitted to the Board of Regents in May. Prior to the planning hearings, Mr. Stanich will be available to answer any questions you may have regarding the preparation of these materials.

cc: Dr. John Antel, Senior Vice Chancellor for Academic Affairs  
Dr. Carl Carlucci, Executive Vice Chancellor for Administration and Finance  
Mr. Tom Ehardt, Associate Vice Chancellor for Finance  
Mr. Chris Stanich, Executive Director for Planning and Policy



**UNIVERSITY OF HOUSTON SYSTEM**  
**UNIVERSITY OF HOUSTON**

**JOHN J. ANTEL, PH.D.**

Theresa M. Monaco Chair  
Senior Vice Chancellor for Academic Affairs, UH System  
Senior Vice President for Academic Affairs and Provost, UH

**MEMORANDUM**

**Date:** January 27, 2012  
**To:** University of Houston Vice Presidents  
**From:** John Antel, Senior Vice President for Academic Affairs and Provost  
Carl Carlucci, Executive Vice President for Administration and Finance  
**Re:** University of Houston FY 2013 Planning & Budgeting Guidelines

**Planning Assumptions**

For FY 2012 and FY 2013, the University of Houston's general revenue appropriation was reduced by \$32.3 million per year, continuing the multi-year trend of universities receiving less support from the state to fund their operations. In addition, President Khator and the Board of Regents, concerned about affordability, do not support a tuition increase for undergraduate students at this time. Therefore, if we are to continue the university's progress as a Tier One institution, we must become more productive with the resources we currently possess, as well as develop new sources of revenue. We must also demonstrate that the investments we make produce positive results in terms of the university's progress card measures and other indicators of success.

The planning and budgeting process for FY13 is shaped by these realities. The university will continue to fund new initiatives next year, but the way we identify and deploy resources to accomplish them will be different from the past:

1. New Resources Generated from Enrollment Growth  
In recent years, strong enrollment growth has produced several million dollars annually for investment in new initiatives. Next year we intend to use these resources primarily – if not exclusively – to address major institutional priorities (e.g., faculty and staff salary increases, facilities maintenance). However, depending upon availability, we will consider allocating some of these funds for compelling priorities within the divisions.
2. Fund Equity, Reallocation and Operating Efficiencies  
With few new resources available for investment in division priorities next year, the use of existing funds must serve as the primary means of pursuing new initiatives. To that

end, reallocating resources from low priority to high priority areas, using fund equity for one-time investments or as short-term bridge funding, and identifying operating efficiencies that reduce costs while freeing up resources should all be considered in the development of your plans. In fact, President Khator and the board will expect significant reallocation to take place as part of our planning process this year.

3. Tuition Rate Increases for Graduate and Professional Students

Although there will be no increase in undergraduate tuition next year, we are considering modest increases in charges to graduate and professional students. These funds would be used to supplement the resources available from enrollment growth and reallocation to address major priorities.

4. New Resources Generated from Student Fee Rate Increases

Next year there will be increases in voluntary and optional fees (e.g., housing, parking, academic certificate programs), as well as increases to the Student Services Fee and the University Center Fee. Because these new resources will further important university goals, the divisions controlling them should describe their use in their plans. Doing so will enable us to present a complete picture of how all new revenue is being applied when the university's plan and budget is submitted to the Board of Regents in May.

5. HEAF and its Recapitalization

HEAF is an important source of funding for one-time capital investments that are essential to the university's goals. Therefore, the divisions controlling these resources should describe in their plans how they intend to use HEAF in FY13. In addition, the university is engaged in a multi-year effort to recapitalize HEAF so that it is used primarily for facilities initiatives. A plan for recapitalization in FY13 should be included, as well.

6. Tier One Resources

Similar to HEAF, the university has resources from the Research Development Fund (RDF), Texas Research Incentive Program (TRIP), Competitive Knowledge Fund (CKF), special items, indirect cost recovery (IDC), and, potentially later this year, the National Research University Fund (NRUF) to make investments in research programs that speed the university's progress as a Tier One institution. Rather than allocating these resources to operations, they should be used, by and large, as an investment fund for major research initiatives. Working together, the divisions of Academic Affairs and Research should develop an FY13 plan for using these funds.

7. Fundraising

As state support constitutes a smaller percentage of the university's resource base, we must increasingly operate more like a private institution, where private support and the endowment serve as a much higher percentage of operating funds. In this environment, fundraising must become a higher priority for the university and each of its colleges.

Planning and budgeting for FY13 will be a much more in-depth process than it has been in previous years – one where we consider university resources in their totality as a means of moving the institution forward, rather than simply planning based on what might be available through new resources. In addition, we want to achieve a higher degree of transparency in the planning process this year. The impact of our plans will be felt strongly by the university



community. Therefore, we ask that you create opportunities for faculty, staff and students to participate. Doing so will ensure not only broad participation in the planning process but widespread communication of your plans to stakeholders. We have also created two new forms to be completed as part of the planning process this year (described below in All-Funds Division Budget Presentation). These forms present an all-funds picture of your budgets, identifying the sources and uses of your resources (both current and proposed), which we believe is essential to transparency and informed decision-making.

## **Elements of Division Plans**

### Progress Cards and Performance Evaluation

The first section of your FY13 plan will be an evaluation of your division's performance in terms of the university's progress card measures and recent planning initiatives. In your performance evaluation (which shouldn't exceed two pages), you should discuss the initiatives your division has undertaken over the past 2-3 years and how they are impacting the progress card measures that are relevant to you, as well as any other performance measures that you monitor. Since assessment of past performance is critical to informed planning, your performance evaluation should provide context for the new initiatives proposed in your FY13 plan.

Following the development of progress cards for the colleges last year, President Khator has asked that this year each of the divisions develop its own progress card. Chris Stanich, who managed the development of the college cards, will meet with each of you about doing so and serve as a resource as you develop your own cards. We ask that you submit a draft of your progress card along with your FY13 planning materials. Then next year, once the division progress cards are finalized, they will be fully integrated into the annual planning and budgeting process.

### Plan Overview

This section of the plan should be brief (no longer than three pages), but it should establish the rationale for the new initiatives that you are proposing for FY13. You should include the following elements:

1. A narrative describing the 1-3 year strategic direction of your division as it relates to accomplishing the university's goals.
2. Internal or external factors affecting your operations and their potential impact on your ability to achieve your goals.
3. A description of the process through which your plan was developed.

### Plan for New Initiatives

This section of your plan should include the new initiatives you are planning for FY13, to be funded through:

1. Requests for new central resources

2. Existing resources within your division (e.g., reallocation, operating efficiencies, fund equity)
3. New resources within your division for FY13 (e.g., increases to voluntary/optional fees, Student Services Fee, University Center Fee)

For each planned initiative, please provide, in 1-2 paragraphs, the following information:

1. A brief description of the proposed investment, including its dollar value, source of funds and use of funds (e.g., faculty or staff FTE, M&O, capital, etc.)
2. An explanation of how the initiative will further the university's goals and applicable progress card measures
3. An identification of which of the university's goals/areas of investment is most applicable to the initiative: (a) national competitiveness, (b) student success, or (c) administrative support and infrastructure

Finally, using the Summary of New FY13 Initiatives form, you should summarize your initiatives for easy reference. This form will be sent to you electronically next week.

#### All-Funds Division Budget Presentation

In the interest of transparency, the university's plan last year was displayed as an all-funds presentation to the Board of Regents. To facilitate doing so again this year, we ask you to complete the following two forms:

1. Fiscal Year 2013 Proposed Budget by Fund  
On this form you are asked to identify by fund (e.g., designated tuition, state general revenue, etc.) how your division's total resources will be allocated in FY13 according to several expense categories (e.g., faculty and staff salaries, M&O, equipment, etc.). All changes from FY12 to FY13 should align with your FY13 Summary of New Initiatives (described above).
2. Three-Year All Funds Division Budgets  
On this form, your division's budgets and actuals for FY11 and FY12 have been provided according to source and expense categories. You are asked to provide comparable budget information for FY13, which should tie to your FY13 Proposed Budget by Fund (described above).

These forms will be forwarded to you electronically next week along with the Summary of New FY13 Initiatives form.

#### **Submission and Review of Plans**

Your plans are due to Ed Hugetz on or before **March 2, 2012**. In the interim, Mr. Hugetz and Tom Ehardt will be available to guide you in the preparation of these materials. All materials submitted as part of the UH budgeting process should be submitted to Mr. Ehardt. We will hold hearings with each of the divisions during the week of March 5. Holding the hearings at this time will provide a forum to discuss your division plans before finalizing the university's FY13 Plan and Budget and submitting it to the Board of Regents in May.

## **Formula Funding from the State of Texas**

Conference Committee HB1 (5-26-11) vs FY10-FY11 Base

University of Houston

Formula	Conference Committee HB1 (5-26-11)								
	-----FY2010-2011 Biennium-----			-----FY2012-2013 Biennium-----			-----Biennial Change----		
	Appropriated FY2010	Appropriated FY2011	Biennial Total	Recommended FY2012	Recommended FY2013	Biennial Total	Dollars	Percent	
Operations Support	\$ 140,017,254	\$ 140,017,254	\$ 280,034,508	\$ 134,682,795	\$ 134,682,794	\$ 269,365,589	\$ (10,668,919)	-3.8%	
Teaching Experience	2,730,905	2,730,905	5,461,810	2,642,533	2,642,533	5,285,066	(176,744)	-3.2%	
E&G Space Support	31,523,918	31,523,918	63,047,836	24,995,042	24,995,042	49,990,084	(13,057,752)	-20.7%	
SUBTOTAL	174,272,077	174,272,077	348,544,154	162,320,370	162,320,369	324,640,739	(23,903,415)	-6.9%	
<b>Special Items</b>									
<i>Restructured Item</i>									
Texas Center for Superconductivity	3,607,625	3,607,625	7,215,250	-	-	-	(7,215,250)	-100.0%	
Houston Partnership for Space Exploration	349,986	349,986	699,972	-	-	-	(699,972)	-100.0%	
Health Law and Policy Institute	290,937	290,937	581,874	-	-	-	(581,874)	-100.0%	
Center for Public Policy	249,375	249,375	498,750	-	-	-	(498,750)	-100.0%	
Partnerships-Support Publ. Schools	1,369,247	1,369,247	2,738,494	-	-	-	(2,738,494)	-100.0%	
Commercial Development of Space	400,901	400,901	801,802	-	-	-	(801,802)	-100.0%	
Learning and Computation Center	1,935,805	1,935,805	3,871,610	-	-	-	(3,871,610)	-100.0%	
Energy Research	2,500,000	2,500,000	5,000,000	-	-	-	(5,000,000)	-100.0%	
Tier 1- Complex System Research Cluster	-	-	-	690,000	690,000	1,380,000	1,380,000	na	
Tier 1- Energy Research Cluster	-	-	-	3,567,500	3,567,500	7,135,000	7,135,000	na	
Tier 1- Health Sciences Research Cluster	-	-	-	2,217,500	2,217,500	4,435,000	4,435,000	na	
Tier 1- Education & Community Advancemen	-	-	-	1,151,509	1,151,509	2,303,018	2,303,018	na	
Subtotal	10,703,876	10,703,876	21,407,752	7,626,509	7,626,509	15,253,018	(6,154,734)	-28.8%	
Small Business Development Center	3,070,697	3,070,697	6,141,394	3,070,697	3,070,697	6,141,394	-	0.0%	
Institutional Enhancement	4,753,967	4,753,967	9,507,934	3,387,201	3,387,201	6,774,402	(2,733,532)	-28.8%	
SUBTOTAL	18,528,540	18,528,540	37,057,080	14,084,407	14,084,407	28,168,814	(8,888,266)	-24.0%	
<b>Other Items</b>									
Texas Competitive Knowledge Fund	4,535,210	4,535,210	9,070,420	3,061,979	3,061,979	6,123,958	(2,946,462)	-32.5%	
Research Development Fund	6,380,651	6,380,651	12,761,302	5,352,736	5,352,736	10,705,472	(2,055,830)	-16.1%	
Organized Activities	1,582,671	1,582,671	3,165,342	-	-	-	(3,165,342)	-100.0%	
Texas Public Education Grant	6,347,054	6,361,042	12,708,096	6,995,555	7,137,368	14,132,923	1,424,827	11.2%	
Worker's Compensation Insurance	491,131	491,131	982,262	349,930	349,930	699,860	(282,402)	-28.8%	
Staff Group Insurance Premiums	5,781,103	6,174,218	11,955,321	4,996,924	5,346,713	10,343,637	(1,611,684)	-13.5%	
SUBTOTAL	25,117,820	25,524,923	50,642,743	20,757,124	21,248,726	42,005,850	(8,636,893)	-17.1%	
TOTAL	\$ 217,918,437	\$ 218,325,540	\$ 436,243,977	\$ 197,161,901	\$ 197,653,502	\$ 394,815,403	\$ (41,428,574)	-9.5%	
<b>Method of Finance</b>									
Net General Revenue	\$ 149,723,264	\$ 155,699,453	\$ 305,422,717	\$ 129,132,679	\$ 128,198,995	\$ 257,331,674	\$ (48,091,043)	-15.7%	
ARRA Funds (for Formula Funding)	5,707,005	-	5,707,005	-	-	-	(5,707,005)	-100.0%	
GR & ARRA SUBTOTAL	155,430,269	155,699,453	311,129,722	129,132,679	128,198,995	257,331,674	(53,798,048)	-17.3%	
Board Authorized Tuition Increases	13,501,189	13,501,189	27,002,378	13,684,074	13,684,074	27,368,148	365,770	1.4%	
Estimated E&G Income	48,986,979	49,124,898	98,111,877	54,345,148	55,770,433	110,115,581	12,003,704	12.2%	
GR DEDICATED SUBTOTAL	62,488,168	62,626,087	125,114,255	68,029,222	69,454,507	137,483,729	12,369,474	9.9%	
TOTAL	\$ 217,918,437	\$ 218,325,540	\$ 436,243,977	\$ 197,161,901	\$ 197,653,502	\$ 394,815,403	\$ (41,428,574)	-9.5%	
<b>FTE Positions</b>									
Authorized	2,839.3	2,839.3		2,700.0	2,700.0				
Actual	2,767.4								
<b>Additional One-time Funding</b>									
Energy Research (one-time ARRA funds)	\$ 3,000,000		\$ 3,000,000						

r:\app11\appn bills

**Elements of Formula Funding  
FY2012-13 Biennium**

**1. Instruction and Operations Formula (about 81% of total formula)**

(Funding for Faculty Salaries, DOE, Instructional Administration, Library, Research Enhancement, Student Services, Institutional Support)

Funding equals semester credit hours times **53.71** times rate below:

	<u>Lower Division</u>	<u>Upper Division</u>	<u>Masters</u>	<u>Doctoral</u>	<u>Special Professional</u>
Liberal Arts	1.00	1.69	3.91	9.23	
Science	1.75	2.93	7.97	21.08	
Fine Arts	1.42	2.33	5.41	7.22	
Teacher Ed	1.41	1.74	2.27	7.37	
Agriculture	2.02	2.54	7.13	9.62	
Engineering	2.42	3.70	7.46	16.03	
Home Economics	1.03	1.66	2.89	7.24	
Law					4.15
Social Services	1.88	2.09	2.98	14.70	
Library Science	1.44	1.12	2.69	9.64	
Vocational Training	1.42	1.89			
Physical Training	1.38	1.18			
Health Services	1.19	1.81	3.15	9.75	2.60
Pharmacy	1.48	5.02	23.28	34.24	3.97
Business Admin.	1.11	1.71	3.16	23.34	9.00
Optometry			5.46	19.12	7.00
Teacher Ed Practice	1.60	1.74			
Technology	2.10	2.45	3.87	2.84	
Nursing	2.03	2.21	4.08	9.23	
Developmental Ed	1.00				
Veterinay Medicine					20.04

**2. Teaching Experience Supplement (about 3 % of total formula)**

Annual funding equals 10 percent of funds generated above from undergraduate hours taught by tenured or tenure track faculty.

**3. E&G Space Support (about 16% of total formula)**

(Funding for Physical Plant and Utilities)

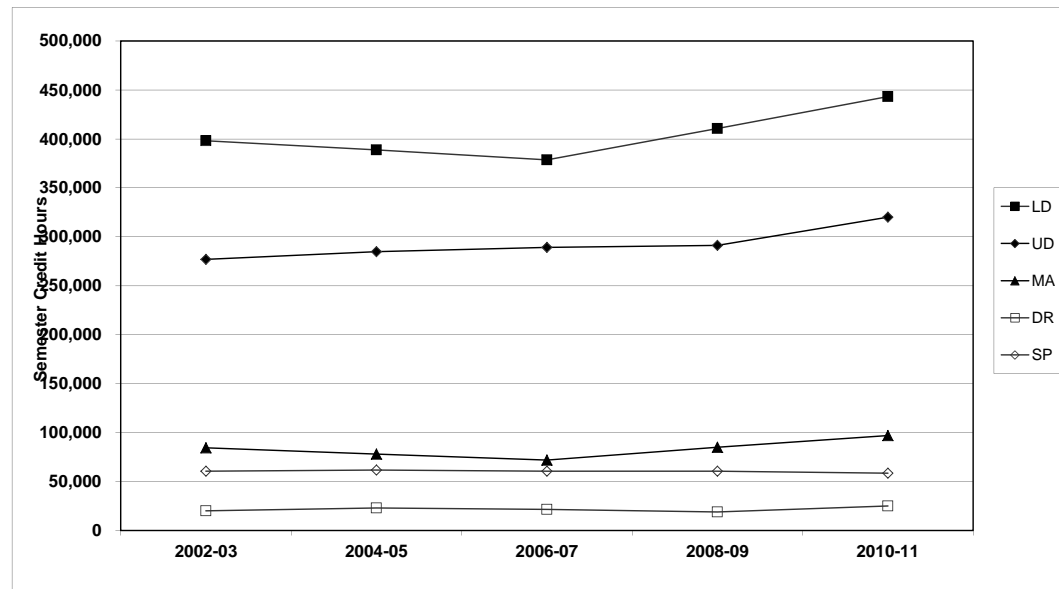
Annual funding equals the Coordinating Board's space standard in E&G square feet times **\$5.25**/square foot

r:\bud12\planning and budgeting guide\4.0 Formula Rates

## University of Houston Base Period Semester Credit Hour Trends

	<u>2002-03</u>	<u>2004-05</u>	<u>2006-07</u>	<u>2008-09</u>	<u>2010-11</u>	<u>02-03 to 04-05</u>	<u>04-05 to 06-07</u>	<u>06-07 to 08-09</u>	<u>08-09 to 10-11</u>	<b>Ten-year Change 02-03 to 10-11</b>
<b>University of Houston Total</b>										
Lower Division	398,242	388,791	378,689	410,699	443,277	-2%	-3%	8%	8%	11%
Upper Division	277,026	284,825	289,120	291,226	320,196	3%	2%	1%	10%	16%
Masters	84,365	78,095	72,011	85,139	96,989	-7%	-8%	18%	14%	15%
Doctoral	20,105	22,989	21,532	18,880	25,160	14%	-6%	-12%	33%	25%
Special Profes'n'l	60,619	61,895	60,773	60,610	58,543	2%	-2%	0%	-3%	-3%
<b>Total SCH</b>	<u>840,357</u>	<u>836,595</u>	<u>822,125</u>	<u>866,554</u>	<u>944,165</u>	0%	-2%	5%	9%	12%

**Trends from 2002-03 through 2010-11**



r:\bud13\Planning and Budgeting Guide\5.0 UH Base Period SCH Trends FY10-11

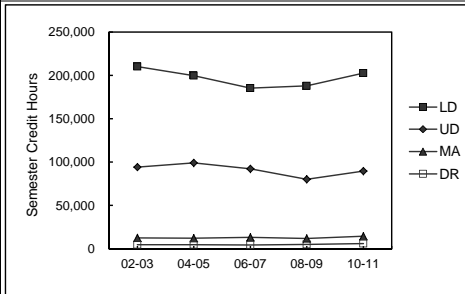
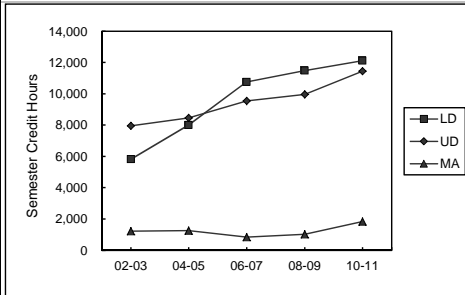
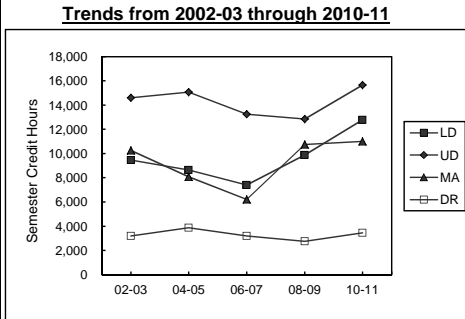
### University of Houston Base Period Semester Credit Hour Trends

	2002-03	2004-05	2006-07	2008-09	2010-11	-----Biennial Percent Change-----				Ten-year Change 02-03 to 10-11	Trends from 2002-03 through 2010-11
						02-03 to 04-05	04-05 to 06-07	06-07 to 08-09	08-09 to 10-11		
<b>Architecture</b>											
Lower Division	5,707	6,251	5,978	6,164	6,029	10%	-4%	3%	-2%	6%	
Upper Division	7,683	8,089	7,741	7,187	7,001	5%	-4%	-7%	-3%	-9%	
Masters	1,560	2,088	1,841	1,586	2,358	34%	-12%	-14%	49%	51%	
Doctoral											
Special Profesn'l											
<b>Total SCH</b>	<b>14,950</b>	<b>16,428</b>	<b>15,560</b>	<b>14,937</b>	<b>15,388</b>	<b>10%</b>	<b>-5%</b>	<b>-4%</b>	<b>3%</b>	<b>3%</b>	
<b>Business Administration</b>											
Lower Division	20,511	18,712	18,236	26,114	25,294	-9%	-3%	43%	-3%	23%	
Upper Division	73,996	72,308	78,275	83,438	94,102	-2%	8%	7%	13%	27%	
Masters	20,294	19,295	17,382	24,058	28,219	-5%	-10%	38%	17%	39%	
Doctoral	909	1,149	1,185	1,101	1,119	26%	3%	-7%	2%	23%	
Special Profesn'l											
<b>Total SCH</b>	<b>115,710</b>	<b>111,464</b>	<b>115,078</b>	<b>134,711</b>	<b>148,734</b>	<b>-4%</b>	<b>3%</b>	<b>17%</b>	<b>10%</b>	<b>29%</b>	
<b>Education</b>											
Lower Division	11,864	15,847	16,623	23,068	20,894	34%	5%	39%	-9%	76%	
Upper Division	26,507	31,315	35,947	42,365	38,141	18%	15%	18%	-10%	44%	
Masters	19,617	15,540	11,638	10,165	10,149	-21%	-25%	-13%	0%	-48%	
Doctoral	5,009	5,491	5,047	3,647	5,362	10%	-8%	-28%	47%	7%	
Special Profesn'l											
<b>Total SCH</b>	<b>62,997</b>	<b>68,193</b>	<b>69,255</b>	<b>79,245</b>	<b>74,546</b>	<b>8%</b>	<b>2%</b>	<b>14%</b>	<b>-6%</b>	<b>18%</b>	

r:\bud13\planning and budget guide\5.0 UH Base Period SCH Trends FY10-11

### University of Houston Base Period Semester Credit Hour Trends

	2002-03	2004-05	2006-07	2008-09	2010-11	-----Biennial Percent Change-----				Ten-year Change 02-03 to 10-11
						02-03 to 04-05	04-05 to 06-07	06-07 to 08-09	08-09 to 10-11	
<b>Engineering</b>										
Lower Division	9,450	8,633	7,393	9,879	12,778	-9%	-14%	34%	29%	35%
Upper Division	14,594	15,060	13,243	12,855	15,666	3%	-12%	-3%	22%	7%
Masters	10,257	8,077	6,204	10,738	10,993	-21%	-23%	73%	2%	7%
Doctoral	3,202	3,862	3,202	2,751	3,463	21%	-17%	-14%	26%	8%
Special Profesn'l										
<b>Total SCH</b>	<b>37,503</b>	<b>35,632</b>	<b>30,042</b>	<b>36,223</b>	<b>42,900</b>	<b>-5%</b>	<b>-16%</b>	<b>21%</b>	<b>18%</b>	<b>14%</b>
<b>Hotel &amp; Restaurant Management</b>										
Lower Division	5,812	8,009	10,754	11,486	12,106	38%	34%	7%	5%	108%
Upper Division	7,950	8,453	9,543	9,953	11,452	6%	13%	4%	15%	44%
Masters	1,218	1,257	850	1,020	1,837	3%	-32%	20%	80%	51%
Doctoral										
Special Profesn'l										
<b>Total SCH</b>	<b>14,980</b>	<b>17,719</b>	<b>21,147</b>	<b>22,459</b>	<b>25,395</b>	<b>18%</b>	<b>19%</b>	<b>6%</b>	<b>13%</b>	<b>70%</b>
<b>College of Liberal Arts and Social Sciences</b>										
Lower Division	209,992	199,728	185,178	187,813	202,607	-5%	-7%	1%	8%	-4%
Upper Division	94,321	99,151	92,167	80,117	89,757	5%	-7%	-13%	12%	-5%
Masters	12,723	12,311	13,326	12,005	14,712	-3%	8%	-10%	23%	16%
Doctoral	4,794	4,829	4,406	4,970	6,253	1%	-9%	13%	26%	30%
Special Profesn'l										
<b>Total SCH</b>	<b>321,830</b>	<b>316,019</b>	<b>295,077</b>	<b>284,905</b>	<b>313,329</b>	<b>-2%</b>	<b>-7%</b>	<b>-3%</b>	<b>10%</b>	<b>-3%</b>

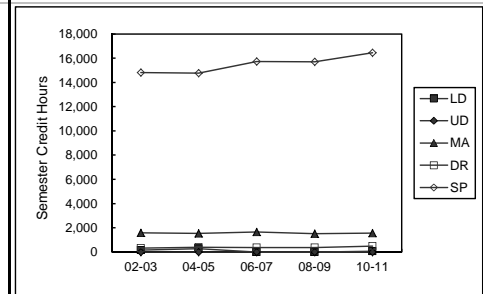
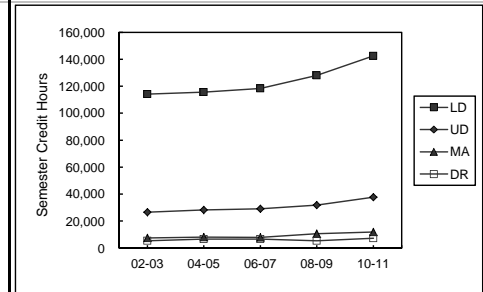
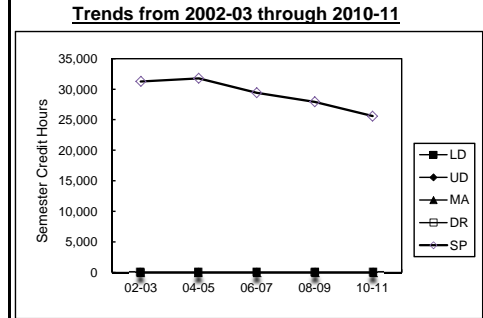


r:\bud13\planning and budget guide\5.0 UH Base Period SCH Trends FY10-11



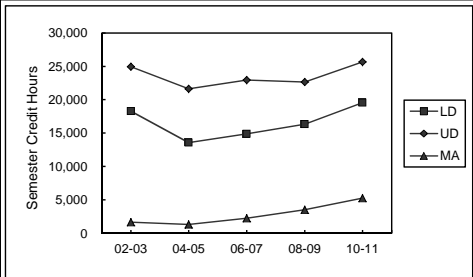
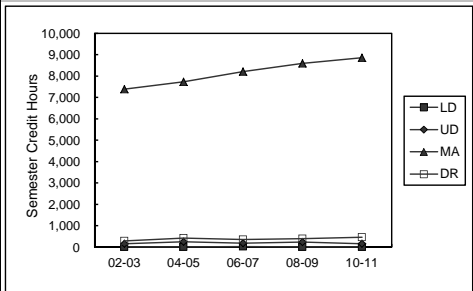
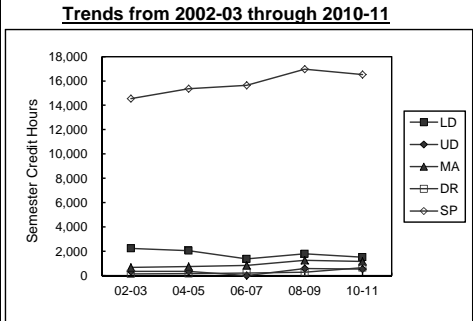
## University of Houston Base Period Semester Credit Hour Trends

	2002-03	2004-05	2006-07	2008-09	2010-11	-----Biennial Percent Change-----				Ten-year Change 02-03 to 10-11
						02-03 to 04-05	04-05 to 06-07	06-07 to 08-09	08-09 to 10-11	
<b>Law</b>										
Lower Division										
Upper Division										
Masters	4	0	0	0	0	-100%	0%	0%	0%	-100%
Doctoral										
Special Profesn'l	31,258	31,774	29,404	27,936	25,579	2%	-7%	-5%	-8%	-18%
<b>Total SCH</b>	<b>31,262</b>	<b>31,774</b>	<b>29,404</b>	<b>27,936</b>	<b>25,579</b>	<b>2%</b>	<b>-7%</b>	<b>-5%</b>	<b>-8%</b>	<b>-18%</b>
<b>Natural Sciences and Mathematics</b>										
Lower Division	114,246	115,717	118,269	128,031	142,441	1%	2%	8%	11%	25%
Upper Division	26,529	28,233	29,075	31,851	37,733	6%	3%	10%	18%	42%
Masters	7,416	8,199	7,830	10,690	11,941	11%	-5%	37%	12%	61%
Doctoral	5,461	6,701	6,760	5,373	7,370	23%	1%	-21%	37%	35%
Special Profesn'l										
<b>Total SCH</b>	<b>153,652</b>	<b>158,850</b>	<b>161,934</b>	<b>175,945</b>	<b>199,485</b>	<b>3%</b>	<b>2%</b>	<b>9%</b>	<b>13%</b>	<b>30%</b>
<b>Optometry</b>										
Lower Division	159	261	0	0	69	64%	-100%	0%	0%	-57%
Upper Division	0	0	1	0	0	0%	0%	-100%	0%	0%
Masters	1,580	1,544	1,646	1,520	1,551	-2%	7%	-8%	2%	-2%
Doctoral	310	379	366	362	480	22%	-3%	-1%	33%	55%
Special Profesn'l	14,813	14,766	15,728	15,709	16,440	0%	7%	0%	5%	11%
<b>Total SCH</b>	<b>16,862</b>	<b>16,950</b>	<b>17,741</b>	<b>17,591</b>	<b>18,540</b>	<b>1%</b>	<b>5%</b>	<b>-1%</b>	<b>5%</b>	<b>10%</b>



### University of Houston Base Period Semester Credit Hour Trends

	2002-03	2004-05	2006-07	2008-09	2010-11	-----Biennial Percent Change-----				Ten-year Change 02-03 to 10-11
						02-03 to 04-05	04-05 to 06-07	06-07 to 08-09	08-09 to 10-11	
<b>Pharmacy</b>										
Lower Division	2,233	2,048	1,364	1,785	1,519	-8%	-33%	31%	-15%	-32%
Upper Division	340	345	0	573	528	1%	-100%	0%	-8%	55%
Masters	677	736	840	1,241	1,147	9%	14%	48%	-8%	69%
Doctoral	136	154	215	280	648	13%	40%	30%	131%	376%
Special Profesn'l	14,548	15,355	15,641	16,965	16,524	6%	2%	8%	-3%	14%
<b>Total SCH</b>	<b>17,934</b>	<b>18,638</b>	<b>18,060</b>	<b>20,844</b>	<b>20,366</b>	<b>4%</b>	<b>-3%</b>	<b>15%</b>	<b>-2%</b>	<b>14%</b>
<b>Social Work</b>										
Lower Division	9	12	18	15	12	33%	50%	-17%	-20%	33%
Upper Division	160	246	177	228	153	54%	-28%	29%	-33%	-4%
Masters	7,389	7,732	8,202	8,590	8,853	5%	6%	5%	3%	20%
Doctoral	284	424	351	396	465	49%	-17%	13%	17%	64%
Special Profesn'l										
<b>Total SCH</b>	<b>7,842</b>	<b>8,414</b>	<b>8,748</b>	<b>9,229</b>	<b>9,483</b>	<b>7%</b>	<b>4%</b>	<b>5%</b>	<b>3%</b>	<b>21%</b>
<b>Technology</b>										
Lower Division	18,259	13,573	14,876	16,344	19,528	-26%	10%	10%	19%	7%
Upper Division	24,946	21,625	22,951	22,659	25,663	-13%	6%	-1%	13%	3%
Masters	1,630	1,316	2,252	3,526	5,229	-19%	71%	57%	48%	221%
Doctoral										
Special Profesn'l										
<b>Total SCH</b>	<b>44,835</b>	<b>36,514</b>	<b>40,079</b>	<b>42,529</b>	<b>50,420</b>	<b>-19%</b>	<b>10%</b>	<b>6%</b>	<b>19%</b>	<b>12%</b>

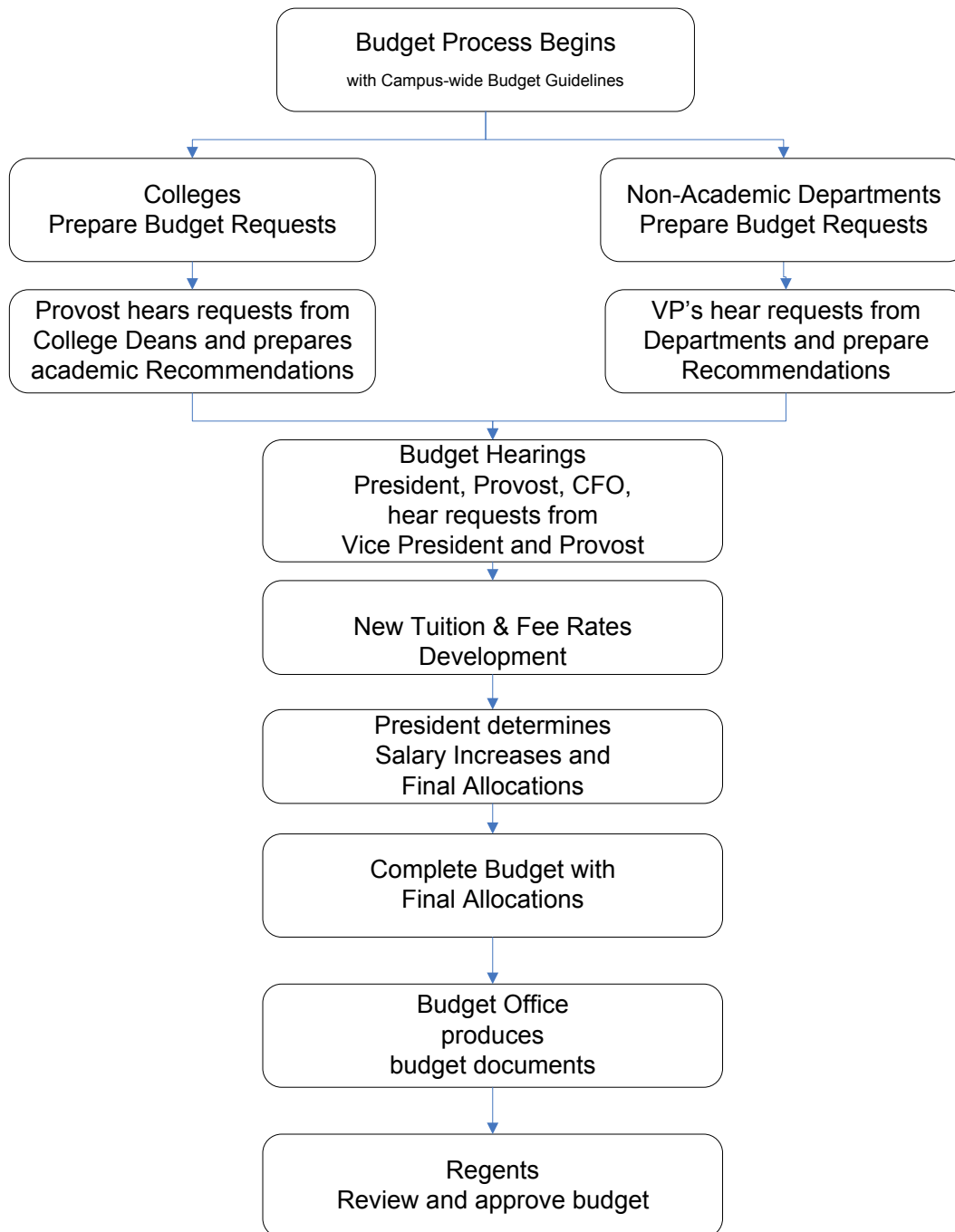


r:\bud13\planning and budget guide\5.0 UH Base Period SCH Trends FY10-11

## **Budget Development Process**

# University of Houston

## FY2013 Operating Budget Process Flowchart



**UH System / University of Houston**  
**Combined Planning, Tuition & Fees, Budgeting Calendars, Fiscal Year 2013**

Week of	Planning	Tuition & Fees	Budget
<b>2011</b>			
Oct-03			
Oct-10			
Oct-17			
Oct-24		T&F Committee Meeting	
Oct-31		T&F Committee Meeting	FY13 Division/College Planning Guidelines Distributed
Nov-07			
Nov-14		BOR Meeting Nov 15 - 16	
Nov-21		Thanksgiving Week	
Nov-28		Consult with Board members regarding Tuition & Fee Structure Changes	
Dec-05		Finals - Dec 7 - 15	
		Consult with Board members regarding Tuition & Fee Structure Changes	
Dec-12		Finals - Dec 7 - 15	
Dec-19		Holidays: December 19 - January 16	
Dec-26			
<b>2012</b>			
Jan-02			
Jan-09			Budget Development G/L's to Colleges & Divisions: Endowment Income, IDC distribution, Intreset Income, et
Jan-16			
Jan-23		UH Public Hearings	
Jan-30			
Feb-06		FY2013 Tuition & Fees BOR Agenda due to BOR Office	BDM Training
Feb-13	College Plans Due to Provost	BOR Meeting Feb 14 & 15 (Approve T&F)	BDM - Old year clean up
Feb-20	College Plan & Budget Hearings		
Feb-27	Divisions Plans Due to Provost and CFO		
Mar-05	Divisions Plan & Budget Hearings		BDM - New Year data entry
Mar-12		Spring Break	
Mar-19			
Mar-26	Materials for Campus Hearings Due		Materials for Campus Hearings Due
Apr-02	Campuses Budget hearings with Chancellor		Campuses Budget hearings with Chancellor
Apr-09			
Apr-16			
Apr-23			
Apr-30		Finals - May 2 - 10	
May-07		Finals - May 2 - 10	
May-14		BOR Meeting May 15 & 16	
May-21			
May-28			
Jun-04			
Jun-11			
Jun-18			
Jun-25			
Jul-02			
Jul-09			
Jul-16	Final Campus Plans & Budgets Due to UHS		Final Campus Plans & Budgets Due to UHS
Jul-23	Assembly of Exec Plan & Budget		Assembly of Exec Plan & Budget
Jul-30	Distribution to BOR		Distribution to BOR
Aug-06			
Aug-13		BOR Meeting August 15 (Approve Budget)	
Aug-20			
Aug-27			

**The University of Houston**  
**Operating Budget for the Fiscal Year 2013**

**Executive Overview**

The annual budget preparation process includes estimating revenues and expenditures. This includes all Educational and General Funds (Group 1), Designated Funds (Group 2), Auxiliary Funds (Group 3), and Restricted Funds (Group 4 and 5). Budgets are developed at the detail (cost center) level for all funds, except Sponsored Programs (Group 5). Sponsored Program cost centers are estimated by the Research Division and reported at the college level.

The final product of this process will convey: How much money we have to spend; where we got the money; what we plan to do with it; and why we plan to spend it in the way we are proposing.

Each operating unit is responsible for developing its own budget request. The dean or vice president of each operating unit will prepare a budget request in accordance with these guidelines. This request will be presented to the provost (in the case of a college) or the vice president (in the case of an administrative unit). The provost and vice presidents will then present the budget request for their respective divisions to the president. Requests should be justified within the context of the institutional goals as articulated by the president. After all the requests have been presented, the president will determine the final allocation of funds for the budget, within the context of the university goals.

Units are responsible for entering their budget requests directly into the Budget Development Module (BDM). After the final allocations have been communicated to the colleges and divisions, adjustments will be made to BDM.

Other highlights of the FY13 Operating Budget are:

State mandated statutory tuition rates will be at \$50 per semester credit hour (SCH) for undergraduate resident students. Nonresident tuition will be \$363 per SCH. Tuition and fee increases for FY2013 will be submitted at the February 14<sup>th</sup>, 2011 Board of Regents meeting.

Requests for *new positions* may be included in the material provided to the Provost or President.

All budgets from non-central sources must include projections for *revenue*. This should be based on historical data with adjustments for new activities in the coming year. Be prepared to explain significant variances from this year's budget.

Do not budget large amounts in unallocated cost centers. Funds should be allocated within the specific colleges or divisions where they will be used. Prudent contingencies, where appropriate, are allowed but should be justifiable.

**The University of Houston**  
**Operating Budget for the Fiscal Year 2013**

**Budget Guidelines**

**Positions**

All continuing positions should be included in the budget. Dollars budgeted for operating expenses should not normally be converted to positions during the course of the fiscal year. Likewise, positions should not be budgeted with a plan to lapse significant unused funds for other purposes.

It is not normally appropriate to fund continuing positions with temporary or one-time dollars.

Deans and vice presidents are encouraged to lapse unspent salary dollars at regular intervals throughout the year. These lapse funds should be reallocated to areas of the college or division to gain maximum benefit.

A. Positions not Filled

Budget dollars and FTE for positions not filled will be budgeted at the pool (node) level, not individual positions.

B. New Positions

Requests for new positions must be adequately justified and approved by the president. Only new positions approved through this process may be included in the budget.

**Benefits**

A. E&G Funds (Group 1) (with the exception of HEAF) - Benefits for E&G state cost centers will be budgeted centrally, not at the college/division level.

B. Local Funds and Sponsored Programs (Groups 2-5) – As a general rule, the benefit rate should be 32% of employees salaries. Specific calculations can be made based on benefit rates located in the appendices section.

**E&G Fund Budgets**

A. Budgeting Prior Year Balances

Unexpended balances in most state cost centers will be carried forward as fund equity at the beginning of the fiscal year.

Carryforward dollars should be requested after the first of the fiscal year for new program start-up costs, equipment, professional development and other one-time uses. **Carryforward dollars cannot be used to fund core operations or continuing positions.**

B. Premium Tuition

Estimates for Premium Tuition—for the colleges of Law, Optometry, and Pharmacy—will be based on enrollment projections from Enrollment Services. Premium tuition revenue and expenditure is budgeted in the respective colleges during the budget process. Premium tuition designated fund code is 2160.

It is the responsibility of the college to monitor the revenue realized in the cost center throughout the year. If necessary, a modification to the premium tuition should be submitted to the budget office in the form of a budget journal so actual is more closely matched to the realized revenue.

### **Local Funds Budget**

The total budget, including the number of staff positions and the size of the maintenance and operation budgets, will be based on need, current projected income, and fund balance available at the start of the fiscal year.

#### **A. Fund Equity**

Fund equity balances remain in their respective cost centers. Year-end budget balances available (BBA's) in non-state cost centers are *not* brought forward at the beginning of the fiscal year. It will be necessary to budget the portion of the unbudgeted fund equity if it will be relied upon to fund the operations of the unit.

At the beginning of the fiscal year, carryforward budgets will be adjusted down if budgeted equity amount is greater than the equity balance available at the beginning of the fiscal year.

#### **B. Revenue**

Each Designated and Auxiliary Enterprise unit is responsible for providing revenue estimates based on program activity and rate structure. At the end of the fiscal year, actual expenses may not exceed actual revenue plus fund balance. Each college is responsible for monitoring the revenue realized in their cost centers throughout the year. The budgets should be reduced by the department at any point during the year at which the full recognition of the revenue is doubtful.

The use of Indirect Cost (IDC) recovery revenues is split between Research and the academic units. Revenue estimates and expenditure allocations are provided each year by Research. These allocations are communicated through the budget office. The departments are responsible for the budgeting of their allocated IDC.

Estimated endowment income distribution is calculated by Treasury and is located in the appendices section of this book. It is the responsibility of the college/division to budget this investment income from column labeled "Est. FY12 income".

#### **C. Course-Based Funding (Fees and Differential Designated Tuition)**

**Incidental fees, Laboratory fees and Differential Designated Tuition** are estimated by colleges and departments, and budgeted during the budget process by the department. Revenues will be monitored by the budget office, but it is the responsibility of the college or department to adjust revenue and expense budgets in the event that the full estimated amount will not be realized or if additional revenue is generated. These fees are approved by the Board of Regents and are intended to support specific courses or activities. Incidental Fee Revenue must not be combined with revenue from other cost centers.

Reminder - any salaries paid from incidental fees must also have employee benefits budgeted (see benefits section above).

#### **D. Encumbrances**



Encumbrances and their budgets, if available, will be carried forward automatically at the beginning of the fiscal year.

E. Utilities

Budget an amount for utility costs based on anticipated usage and rate estimates that reflect the projected utility cost increases.

F. Auxiliary Administrative Charges

The activities classified as auxiliary are self-supporting. As such, the price of goods and services are set at a level to cover ordinary operating expenses.

Auxiliary activities consume certain services that are provided by the administrative areas. Therefore it is appropriate that auxiliary activities share a proportional amount of the administrative costs. This proportional cost is assessed based on actual expenditures less the cost of goods sold. The charge applies to all auxiliary cost centers and is assessed at the end of each month throughout the year.

The FY13 budget should be based on the rate of 6% (which is flat to the FY11 budget) with an estimate included in the expenditure budgets for all auxiliary cost centers.

**Sponsored Programs**

Units supported by these funds are allowed to spend as revenue is recorded. Sponsored Project cost centers are budgeted for the life of the award and do not necessarily coincide with the University fiscal year. Operating units are responsible for cost centers within their areas and will ensure spending within estimated revenue.

The Research Division will assist in estimating the expenditures and balances available for FY13.

**The University of Houston**  
**Operating Budget for the Fiscal year 2013**

**Budget Principles**

The development of the Fiscal year 2013 (FY13) operating budget will be based on the following budget principles:

*Planning Driven Budgeting.* The allocation of resources is driven by the priorities and initiatives defined in the planning process.

*Realism.* Recommended budgets for ongoing operations reflect current levels of actual income and expenditures. Budgets should accurately reflect the pool from which the expenditures are expected to occur. Recommended budgets are developed from base budgets with a check on current performance.

*Unbiased Forecasts.* Income projections are maximum likelihood estimates. They reflect neither an upward nor downward bias.

*Full Disclosure.* All revenue sources are budgeted. Prior year balances in support of current year expenditures are budgeted. All sources of funds supporting expenditures are included in budgeted income estimates.

Uses of available funds include all budgeted expenditures and transfers. Expense budgets should be established for those funds that are expected to be used. Conversely, funds cannot be spent or transferred unless they are budgeted.

*Balance.* Budgeted sources of funds available are equal to budgeted uses of funds.

*Prudent Fund Balances.* Prudent and reasonable fund balances remain unbudgeted.

*Year to Year Comparability.* Changes in income and expenditures from one fiscal year to another reflect only substantive changes in funds available and expenditures. Year to year changes in income and expenditures do not result from changes in accounting conventions, organizational changes, creation or consolidation of cost centers, or shifts in income and expenditure classifications.

*Compatibility.* Budget reporting practices and conventions agree with generally accepted accounting principles. Budgeted income and expenditures are reported to correspond with actual income and expenditures.

# University of Houston Merit Increase Guidelines for Staff Employees

## FY2013 Merit Increase Structure Based on FY2012 PCD Ratings

<u>PCD Rating</u>	<u>Salary Increase</u>
Generally Meets Expectations	1% to 2%
Fully Meets Expectations	2% to 3%
Exceeds Expectations	3% to 5%

### General

To be eligible for a merit increase, the staff employee must be classified as benefits-eligible and have a current staff performance appraisal on file establishing a record of job performance.

Salary adjustments for employees on contract will be handled as specified in the contract.

Staff merit increases will be effective September 1, 2012.

### Definitions

*Benefits-eligible staff employee:* An employee who is hired to work at least 20 hours per week for a period of at least four and one-half months. Excluded from this definition are students employed in positions that require student status as a condition of employment (both monthly and hourly paid students) and individuals employed in faculty (both teaching and research) positions. Teaching Fellows, Teaching Assistants, Graduate Assistants and Research Assistants are not considered benefits-eligible staff employees.

*Merit increase:* A pay increase granted in recognition of an employee's individual performance level and based upon documented performance criteria.

*Merit increase budget:* The budget amount, determined by the administration that is authorized for merit increases during the budget preparation.

### Basic Eligibility Criteria

Individuals must be continuously employed at UH/UHSA in a benefits-eligible staff position for at least six (6) months prior to the effective date of the merit increase program (employed on or before March 1). Non-benefits eligible staff are not eligible to receive a merit increase.

Employees must have a current PCD (within the current fiscal year) on file in Human Resources with a rating of "Generally Meets Expectations," "Fully Meets Expectations" or "Exceeds Expectations."

Employees must have completed the mandatory training required for state and federal compliance by the deadline in accordance with SAM 02.A.11.

Employees with current pay rates over their respective pay range maximums are not eligible for merit pay increases to base pay. Likewise, no merit increase will be approved that results in an employee's new pay rate exceeding the pay range maximum.

Employees who have received a pay adjustment equal to or greater than 10% within six (6) months of the effective date of the merit increase program, on or after March 1, are not eligible to receive a merit increase.

No merit increase will be approved if the employee is indebted to the University under MAPP 5.03.01 Employee Financial Responsibility. Employees who clear their debt within 90 days of the official merit program date (September 1 to December 1), will be eligible for the increase on the first day of the next pay period following the date Human Resources is notified of the payment. This increase will not be retroactive. Employees who do not clear their debt by December 1 will not receive an increase this fiscal year.

Final merit increase guidelines for staff employees are subject to revision by Human Resources and/or the University President.

### **Responsibilities**

The President, Provost, Vice Presidents, Deans, Chairs, Principal Investigators or Directors may recommend merit increases for benefits-eligible staff employees consistent with these merit increase guidelines.

The Research Division will review individual recommendations for Contracts and Grants (PeopleSoft Fund Group 5) and Educational & General (PeopleSoft Fund Group 1) project accounts to ensure availability of funding that will allow pay adjustment by the sponsoring agency. Research Division approval must be obtained before forwarding recommendations to the Division Vice President for approval.

Following approval by the Division Vice President, Human Resources will review the merit increase recommendations for compliance with merit increase guidelines, and ensure that equity across the university is preserved.

Proposed merit increases should not be communicated to staff employees until reviewed by Human Resources and all appropriate approvals have been obtained.

Questions concerning budget issues should be directed to the Budget Office (Margie Hattenbach 3-0655) or to the appropriate college or division business administrator. Compensation related questions should be directed to the compensation section of Human Resources (Sara Chelette 3-5769).

## **Budget Training**



UNIVERSITY OF HOUSTON SYSTEM  
UNIVERSITY OF HOUSTON

Office of Budget Administration and Analysis

Memorandum

TO: Division/College Administrators  
FROM: Margie Hattenbach  
DATE: January 25<sup>th</sup>, 2012  
SUBJECT: Training Schedule for Budget Development

**BDM data entry and report generating functions are unchanged from FY12 budget development. Therefore training classes are recommended only for those staff that are new to the BDM system operations.**

The training manual is currently available on-line. Print copies for each BDM user to review and take to the training. The manual is located at the following address:

<http://www.uh.edu/finance/Departments/Budget/BDM%20Training%20book.doc>

A list of users attending training with training day preference must be provided to Shabana Mohiuddin at [SRMohiuddin@central.uh.edu](mailto:SRMohiuddin@central.uh.edu). The name, empl ID, responsible departments and security level (view or update) must be included. Excel spreadsheets or word documents will be accepted.

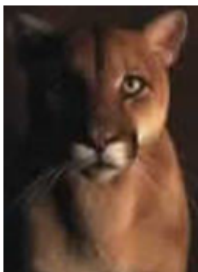
- Training will be held from February 9<sup>th</sup> through the 13<sup>th</sup> 2012.
- BDM training will be held at Energy Research Park, Building 2, Lab room 224.

BDM Training Schedule

Thursday, February 9 <sup>th</sup> 2012	9:00 to 11:30
Friday, February 10 <sup>th</sup> 2012	9:00 to 11:30
Monday, February 13 <sup>th</sup> 2012	2:00 to 4:30

## BUDGET OFFICE

---



□ **Training**

*Training materials and schedules*

---

□ **Forms**

*Budget related forms*

---

□ **FY2011 Plan & Budget**

*Executive Plan & Budget*

---

□ **Prior Year Plan & Budget**

*Executive Plan & Budget*

---

□ **FY 2011 Planning & Budgeting Guide**

*Budget related documents and various references*

---

□ **Prior Year Planning & Budgeting Guide**

*Budget related documents and various references*

---

□ **Helpful Hints**

*Budget related Hints*

---

□ **Contact List**

*Budget Office contacts*

---

□ **Glossary**

*Glossary of commonly used budget terms*

---

□ **Printing Tips**

*For Go Green UH*

---



## BUDGET OFFICE

---

<a href="#">Home</a>	<a href="#">Training</a>	<a href="#">Forms</a>	<a href="#">FY06 Plan &amp; Budget</a>	<a href="#">FY06 Guide</a>	<a href="#">Helpful Hints</a>	<a href="#">Contacts</a>	<a href="#">Glossary</a>
----------------------	--------------------------	-----------------------	--	----------------------------	-------------------------------	--------------------------	--------------------------

---

### □ Training

#### Budget Development Module

[Budget Development Module Training](#)

[Frequently Asked Questions](#)

[Budget Module Training Guide](#)

#### BUDGET

[Budget Journal Training](#)

Last updated on 5/6/11

Comments to: [srmohiudoin@central.uh.edu](mailto:srmohiudoin@central.uh.edu)



UNIVERSITY OF HOUSTON | UH-CLEAR LAKE | UH-DOWNTOWN | UH-VICTORIA  
UH SYSTEM at CINCO RANCH | UH SYSTEM at SUGAR LAND | UH SYSTEM DISTANCE EDUCATION/CAMPUSNET  
State of Texas | Compact with Texans | Statewide Search | Reporting Copyright Infringement | Privacy and Policies  
©2004 University of Houston System | 4800 Calhoun, Houston, Texas 77004 | Contact UH System | Feedback

[http://www.uh.edu/finance/Departments/Budget/budget\\_training.htm](http://www.uh.edu/finance/Departments/Budget/budget_training.htm)



## **Appendices**

# University of Houston Mission and Goals

## UH Mission

The mission of the University of Houston is to discover and disseminate knowledge through the education of a diverse population of traditional and non-traditional students, and through research, artistic and scholarly endeavors, as it becomes the nation's premier public university in an urban setting. In this role, the University of Houston applies its expertise to the challenges facing the local, state, national, and international communities, and it establishes and nurtures relationships with community organizations, government agencies, public schools, and the private sector to enhance the educational, economic, and cultural vitality of Houston and Texas.

## UH Goals

- *National Competitiveness*  
UH will become a nationally competitive public research university as measured by the Top American Public Research University analysis and/or Carnegie Foundation for the Advancement of Teaching.
- *Student Success*  
UH will have a student profile consistent with a nationally competitive public research university by creating an environment in which student success can be ensured.
- *Community Advancement*  
UH will commit to fulfilling regional and state workforce needs while becoming the primary engine of social, economic, and intellectual development.
- *Athletic Competitiveness*  
UH will provide a comprehensive educational experience to its students and within this context, it will seek to build the strongest athletic program possible.
- *Local and National Recognition*  
UH will be known for its accomplishments locally and nationally.
- *Competitive Resources*  
UH will build a resource base that enables it to accomplish its mission and realize its vision.

## GLOSSARY OF TERMS FOR THE OPERATING BUDGET

Academic Year	A nine-month period within a fiscal year beginning in September and ending in August and containing the academic sessions held during consecutive Fall and Spring terms.
Appropriation	Operating and capital outlay funds provided to the University of Houston for a fiscal year as appropriated by the State Legislature and signed by the Governor.
Approved Positions	The maximum annualized FTE that can be filled during the fiscal year. Positions are approved through the Legislative Appropriation Request process.
Auxiliary Enterprises	An activity that furnishes a service to students, faculty, or staff and charges a fee directly related to, but not necessarily equal to the cost of the service. They are essential elements in support of the educational program, and conceptually should be regarded as self-supporting.
Budget	Original Budget loaded: The original amount of budget approved during the budget development and allocation process. Original/Base Budget: The original budget plus or minus any permanent transfers or adjustments. Adjustment/Current Budget: The original budget plus or minus any temporary or one-time adjustments.
Budget Development Module	(BDM) Web-based budgeting tool.
Budget Journal	The document used to establish or modify the spending authority in a cost center.
Budget Balance Available (BBA)	The amount of budget that has not been spent or is not committed.
Budget Principles	The philosophy within which the operating and capital budgets are developed.
Budget Process	The activity that encompasses the submission of the biennial Legislative Appropriation Request, the Appropriations Act, the allocations of funds at the University level by the President, and the University Operating Budget. Allocations are determined by the university mission, size, organization, economic factors and Texas law.
Budgeted	Refers to planned level of expenditures, performance, or number of positions for a particular fiscal year.
Biennium	A two-year period. In Texas, as used in fiscal terms, this is the two-year period beginning on September 1 and ending on August 31 of odd-numbered years, for which general state Appropriations are made. A biennium is identified by the two-fiscal years of which it consists, e.g., 2012- 2013 biennium.
Capital Budget	That portion of the budget that is expended for capital construction projects or capital acquisitions.
Capital Equipment	A basic expenditure category represented in the university operating budget, which details the cost of equipment with a life expectancy of more than one year and a cost of \$5,000 or more.
Cost Center Budget	The spending authority established for an activity. The budget does not affect fund equity or cash. A cost center may have a budget balance available (BBA) but be considered in deficit, if actual expenditures exceed realized revenue. A BBA is only meaningful if the revenue budget is fully supported by cash in the general ledger.

Education and General (E&G) Funds	The general activities supported primarily by State Funds to provide services and programs throughout the University, including instructional programs leading to formal degrees, research and public service.
Encumbrance	A financial transaction which reserves funds for a specific purpose.
Estimated	Refers to estimated revenues and expenditures for the current fiscal year. Because these numbers are developed later in the fiscal year, they are considered to be more accurate than budgeted numbers.
Expended	Refers to actual dollars or positions utilized during a completed fiscal year.
Expenditure	A financial transaction which records the cost of operations.
Fiscal Year	A twelve-month period of time beginning September 1 <sup>st</sup> of one calendar year and ending August 31 <sup>st</sup> of the next calendar year, and specified by the calendar year in which the fiscal year ends, e.g. September 2012 through August 2013 is fiscal year 2013.
Full Time Equivalent (FTE) Positions	<p>A unit of measure that represents the average number of state personnel working 40 hours a week. A nine-month faculty position (the academic year) is equal to an annual .75 FTE. A University Support Personnel or Administrative and Professional position for twelve months equal is to 1.0 FTE. This includes all faculty positions, full time exempt positions, full time classified positions, and full time hourly and seasonal positions. In addition, it includes those positions which are not full-time regular positions, but are converted to full-time equivalents.</p> <p><b>Term FTE:</b> The Full Time equivalent which should be reported on the Personnel Action Request (PAR) for the duration of the assignment. It is equal to the standard hours per week divided by forty.</p> <p><b>Annualized FTE:</b> Equal to the Term FTE times the duration of the assignment. The duration of the Fall or Spring semester is 4.5 months/12 months which equals 0.375. The duration of the three month summer is 3 months/12 months which equals 0.25. The Annualized FTE is the calculated amount which is reported to the State on a quarterly basis.</p>
Full Time Equivalent (FTE) Students	A workload measure based on credit hours generated for each term divided by the appropriate undergraduate or graduate divisor. The divisor (one FTE) is equivalent to 15 credit hours at the undergraduate level or to 12 credit hours at the masters level or special professional level, and to 9 credit hours at the doctoral level.
Fund Equity	The difference between realized revenue and actual expenditures, net of any other fund additions or deductions. The fund equity is not affected by the budget or encumbrances.
General Revenue Funds	State funds appropriated to the University and which are used for operating funds.
Higher Education Assistance Funds	Special appropriations for eligible institutions of higher education to be used (HEAF) for acquisition of land, permanent improvements, construction and equipping of buildings, major repair or rehabilitation of buildings, and the acquisition of capital equipment, library books and library material.
Legislative Appropriation Request (LAR)	The method of submission by each state agency as a biennial budget request to the Legislative Budget Board in the year preceding the convening of the Legislature.
Legislative Budget Board (LBB)	The Texas Legislative Budget Board (LBB) is a permanent, joint committee of the Texas Legislature that develops recommendations for legislative appropriations for all agencies of state government.

Local E &G Funds	Dollars collected from students by the University, remitted to the state treasury and then reallocated to the University for expenditures on Education and General activities. Students' tuition and matriculation fees make up the largest portion of these funds.
Local Funds / Institutional Funds	Funds that belong to entities of the University that are maintained in local banks rather than the State Treasury. Some student fees, Designated Tuition, time deposits, sales and services make up the largest portion of these funds.
Maintenance and Operations	A basic expenditure category represented in the university operating budget, which details the cost of postage, telephones, travel, consumable supplies, and non-capital equipment.
Operating Budget	An expenditure plan developed by a university for each fiscal year. The plan must conform to the annual allocation/appropriation and indicate estimated expenditures for the year by expenditure category.
Personnel Action Request (PAR)	The form used to initiate an employee change usually resulting in a payroll action.
Position Request (PR)	The form used to create a new position or change an existing one, frequently resulting in a budget action.
Project Year	A twelve-month period beginning in the first month a project cost center is established. A project year may not coincide with the university's fiscal year.
Recommended Budget	Refers to dollar amount or number of FTE positions recommended by the institution for the subsequent fiscal year.
Requested	Refers to the dollar amount or number of FTE positions sought by a college or division for use during the subsequent fiscal year.
Revenue	Financial transaction, which records new funds received by the institution.
Salaries & Benefits	A basic expenditure category represented in the university operating budget, which details funds to pay faculty and salaried employees.
Salary Rate	An individual's total annual rate of pay, excluding benefits.
Wages	A basic expenditure category represented in the university organizational budget, which details the cost of temporary employment such as Student Assistants, Graduate Assistants, Consultants, and Faculty Adjuncts.
Workflow	Order in which specific work is performed; in PeopleSoft, a background process that creates a list of administrative actions based on the user's criteria and specifies the procedure associated with each action.

For additional terms and definitions please visit:  
<http://www.uh.edu/finance/Glossary.htm>

## Full-Time Equivalent Analysis and Definitions

### Full-Time Positions

With regard to full-time position, FTE should exceed 1.0 only when the additional responsibilities represent a true overload and not simply a reassignment. Chair responsibilities, for example, do not constitute an overload; neither do additional teaching responsibilities or special awards faculty. FTE overloads will be assigned only when a 1.0 FTE employee accepts additional responsibilities in another division.

### Part-Time Positions

In general, all FTE will be assigned according to hours worked per week, with 40 hours equal to 1.0 FTE (the state standard). Below are definitions to be followed regarding temporary faculty positions:

#### *Lecturer (Category I)*

Lecturers whose responsibilities are primarily instructional are assigned 0.20 FTE per 3 credit hour course (or eight hours per week).

#### *Lecturer (Category II)*

Lecturers whose responsibilities include instruction plus additional responsibilities are assigned 0.25 FTE per 3 credit hour course (or 10 hours per week).

#### *Teaching Assistant/Teaching Fellow/Research Assistant*

The standard assignment for these positions is 0.5 FTE (for 20 hours per week). This assignment will not be exceeded. The teaching fellows classification must be used for teachers of record.

#### *Faculty Retiree*

In accordance with the state's Voluntary Modification Plan, these positions are assigned 0.49 FTE.

#### *Summer Instruction*

Benefits-eligible faculty are assigned 0.5 FTE per 3 credit hour course (or 20 hours per week over a three-month period). Non-benefits-eligible faculty are assigned 0.2 FTE per 3 credit hour course (or eight hours per week over a three-month period).

#### *Summer Research Faculty*

Summer research faculty are assigned 1.0 FTE (for 40 hours per week over a three month period).

University of Houston  
Standard Work hours per Week for Part-time Faculty

<b>Fall or Spring Semester</b>				
	Semester Credit Hour Value of Courses Taught	Standard Work Hours Per week	Term FTE*	Annualized FTE**
Lecturer (Category I)	1	2.7	0.07	0.03
	2	5.3	0.13	0.05
	3	8.0	0.20	0.08
	4	10.7	0.27	0.10
	5	13.3	0.33	0.13
	6	16.0	0.40	0.15
	7	18.7	0.47	0.18
	8	21.3	0.53	0.20
	9	24.0	0.60	0.23
	10	26.7	0.67	0.25
	11	29.3	0.73	0.28
	12	32.0	0.80	0.30
Lecturer (Category II)	1	3.3	0.08	0.03
	2	6.7	0.17	0.06
	3	10.0	0.25	0.09
	4	13.3	0.33	0.13
	5	16.7	0.42	0.16
	6	20.0	0.50	0.19
	7	23.3	0.58	0.22
	8	26.7	0.67	0.25
	9	30.0	0.75	0.28
	10	33.3	0.83	0.31
	11	39.7	0.92	0.34
	12	40.0	1.00	0.38

<b>Summer (three months)</b>				
Regular 9 Month Faculty	1	6.7	0.17	0.04
	2	13.3	0.33	0.08
	3	20.0	0.50	0.13
	4	26.7	0.67	0.17
	5	33.3	0.83	0.21
	6	40.0	1.00	0.25
Lecturer (Category I)	1	2.7	0.07	0.02
	2	5.3	0.13	0.03
	3	8.0	0.20	0.05
	4	10.7	0.27	0.07
	5	13.3	0.33	0.08
	6	16.0	0.40	0.10
Lecturer (Category II)	1	3.3	0.08	0.02
	2	6.7	0.17	0.04
	3	10.0	0.25	0.06
	4	13.3	0.33	0.08
	5	16.7	0.42	0.10
	6	20.0	0.50	0.13
Summer Research Faculty		40.0	1.00	0.25
		20.0	0.50	0.13

\*Term FTE is the Full Time Equivalent which should be reported on the personnel Action Request (PAR) for the duration of the assignment. It is equal to the standard hours per week divided by forty.

\*\*The annualized FTE is equal to the Term FTE times the duration of the assignment. The duration of the Fall or Spring semester is 4.5 months/12 months which equals 0.375. The duration of the three month summer is 3 months/12 months which equals 0.25. The Annualized FTE is the calculated amount which is reported to the State on a quarterly basis.

**University of Houston  
Employer Matching Rate for Estimated Benefit Cost**

**Fiscal Year 2012 Retirement Plans:**

TRS – 6.0% Employer Contribution  
ORP – 6.0% Employer Contribution (if hired after 9/1/1995)  
ORP – 8.5% Employer Contribution (if hired prior to 9/1/1995)

**Fiscal Year 2011 Retirement Plans:**

TRS – 6.644% Employer Contribution  
ORP – 6.4% Employer Contribution (if hired after 9/1/1995)  
ORP – 8.5% Employer Contribution (if hired prior to 9/1/1995)

**Calendar Year 2012 Wage Base for FICA:**

Social Security Tax Rate for Employer - 6.2% up to \$110,100 maximum wage  
Social Security Tax Rate for Employee - 4.2% up to \$110,100 maximum wage  
Medicare Tax – 1.45% no wage maximum

**Calendar Year 2011 Wage Base for FICA:**

Social Security Tax Rate for Employer – 6.2% up to \$106,800 maximum wage  
Social Security Tax Rate for Employee – 4.2% up to \$106,800 maximum wage  
Medicare Tax – 1.45% no wage maximum



Health Premium Rates with State Contribution for Full-Time Employees  
HealthSelect of Texas – Full Time  
FY 2013

Coverage	Premium	State Pays	Member Pays
Member Only	\$470.38	\$470.38	\$0.00
Member & Spouse	\$1,008.78	\$739.58	\$269.20
Member & Children	\$830.36	\$650.62	\$180.24
Family	\$1,369.26	\$919.82	\$449.44

Health Premium Rates with State Contribution for Part-Time Employees  
HealthSelect of Texas – Part Time  
FY2013

Coverage	Premium	State Pays	Member Pays
Member Only	\$470.38	\$235.19	\$235.19
Member & Spouse	\$1,008.78	\$369.79	\$638.99
Member & Children	\$830.36	\$325.31	\$505.55
Family	\$1,369.26	\$459.91	\$909.35

Health Premium Rates with State Contribution for Full-Time Employees  
HealthSelect of Texas – Full Time  
FY 2012

Coverage	Premium	State Pays	Member Pays
Member Only	\$438.30	\$438.30	\$0.00
Member & Spouse	\$939.78	\$689.04	\$250.74
Member & Children	\$774.10	\$606.20	\$167.90
Family	\$1275.58	\$856.94	\$418.64

Health Premium Rates with State Contribution for Part-Time Employees  
HealthSelect of Texas – Part Time  
FY2012

Coverage	Premium	State Pays	Member Pays
Member Only	\$438.30	\$219.15	\$219.15
Member & Spouse	\$939.78	\$344.52	\$595.26
Member & Children	\$774.10	\$303.10	\$471.00
Family	\$1275.58	\$428.47	\$847.11

**University of Houston System  
Non-Health Insurance Expenses  
Policy Year 2012**

University of Houston	2012
Accident - Blanket	\$ 3,252.00
Aircraft	\$ 13,232.00
Attendant Care Liability	\$ 2,187.37
Intercollegiate Sports-UH Main=\$135,330 (Premium-\$45,000, \$90,330-Commission, TPA & Admin Fees), \$451,722.23 Replenishment of Claims Fund	\$587,052.23
Automobile	\$ 57,335.00
Broadcasters/Publishers Liability	\$ 9,709.00
Crime (Systems)	\$ 4,343.00
Directors & Officers/Educators Legal	\$ 132,662.00
Fine Arts	\$ 810.00
Fine Arts-Blaffer Gallery	\$ 1,890.00
Foreign Package	\$ 2,489.00
Leased Premises General Liability	\$ 5,245.50
Medical Professional Clinics	\$ 80,149.69
Medical Student Professional	\$ 9,693.00
Property	\$ 2,634,631.21
Special Events General Liability	\$ 9,282.00
Special Events General Liability-Audit 2011/2012	\$ 7,639.89
Special Crime	\$ 7,428.00
Willis Fee	\$ 78,990.00
<b>University of Houston Central Total</b>	<b>\$ 3,648,020.89</b>
University of Houston System	
Automobile	\$ 1,940.00
Crime (Systems)	\$ 48.00
Directors & Officers/Educators Legal	\$ 1,459.00
Property	\$ 86,958.22
Special Crime	\$ 82.00
Willis Fee	\$ 1,990.00
<b>University of Houston System Total</b>	<b>\$ 92,477.22</b>

**University of Houston  
Premium Allocation FY12**

Row Labels	Sum of Premium	
<b>Accident - Blanket</b>	<b>\$</b>	<b>3,252.00</b>
Architecture - Collaborative Design/Build Studio		150.00
Architecture - Graduate Design/Build Studio		150.00
Campus Recreation		1,142.00
Charter School		430.00
Children's Learning Centers		520.00
Engineering Dean's Office - GRADE Camp		60.00
Engineering Dean's Office - RET Camp		20.00
Engineering Dean's Office - REU Camp		20.00
Engineering-PROMES-STEP Forward Camp		20.00
University Bands - Cougar Band Camp		370.00
University Bands - Spirit of Houston Marching Band		370.00
<b>Aircraft</b>	<b>\$</b>	<b>11,897.00</b>
Civil and Environmental Engineering		11,897.00
<b>Aircraft - Extension</b>	<b>\$</b>	<b>1,335.00</b>
Civil and Environmental Engineering		1,335.00
<b>Attendant Care</b>	<b>\$</b>	<b>2,187.37</b>
Health Center		2,187.37
<b>Automobile</b>	<b>\$</b>	<b>57,335.00</b>
ANIMAL CARE		2,099.00
ARTE PUBLICO		219.00
ATHLETICS		10,773.00
BIOLOGY		423.00
BM-CARP		219.00
Campus Recreation		438.00
CHEMICAL ENGINEERING/DIESEL RESEARCH TEST CENTER		219.00
COASTAL CENTER		438.00
COLLEGE OF ENGINEERING		438.00
COLLEGE OF OPTOMETRY		731.00
COLLEGE OF PHARMACY		423.00
DPS FIRE MARSHALL		596.00
DPS PARKING ENFORCEMENT		1,314.00
DPS POLICE DEPT.		8,762.00
EHS & RM		438.00
ELEC & COMP ENGINEERING		219.00
ENGLISH		438.00
GEOSCIENCES		1,811.00
HEALTH HUMAN PERFORMANCE		219.00
HOTEL & REST. MANAG.		219.00
INFORMATION TECHNOLOGY		230.00
KUHF-FM		438.00
KUHT-TV		423.00
LIBRARY		219.00

PARKING & TRANSPORTATION		1,072.00
PLANT OPS		230.00
PLANT OPS BLDG MAINT		10,403.00
PLANT OPS CUSTODIAL		219.00
PLANT OPS GROUNDS		2,814.00
PLANT OPS SKILLED TRADES		2,169.00
PLANT OPS SOLID WASTE		2,028.00
PLANT OPS UTILITY SERVICES		846.00
POSTAL SERVICES		1,284.00
POWER PLANT		1,737.00
PRINTING PLANT		423.00
RES. LIFE & HOUSING		1,284.00
THEATER		423.00
UNIVERSITY CENTER		438.00
VETERAN AFFAIRS		219.00
<b>Broadcasters/Publishers Liability</b>	<b>\$</b>	<b>9,709.00</b>
ARTE PUBLICO		680.00
Daily Cougar		1,650.00
KUHA-FM		525.00
KUHF-FM		1,740.00
KUHT-TV		4,844.00
Transitions		40.00
UH Magazine		230.00
<b>Crime</b>	<b>\$</b>	<b>4,343.00</b>
Risk Management		4,343.00
<b>Directors &amp; Officers Liability</b>	<b>\$</b>	<b>132,662.00</b>
Risk Management		132,662.00
<b>Fee - Willis</b>	<b>\$</b>	<b>78,990.00</b>
Risk Management		78,990.00
<b>Fine Arts</b>	<b>\$</b>	<b>810.00</b>
Risk Management		810.00
<b>Fine Arts - Blaffer</b>	<b>\$</b>	<b>1,890.00</b>
Blaffer Gallery		1,890.00
<b>Foreign Package</b>	<b>\$</b>	<b>2,489.00</b>
Bauer Graduate and Professional Programs EMBA		1,831.00
Risk Management (GL/AL)		658.00
<b>Intercollegiate Sports - UH</b>	<b>\$</b>	<b>587,052.23</b>
ATHLETICS		587,052.23
<b>Leased Premises General Liability</b>	<b>\$</b>	<b>5,245.50</b>
KUHF-FM		520.00
KUHT-TV		260.00
SBDC 117 Lane Dr		139.00
SBDC 2300 Fanin		3,770.50
SBDC 2302 Fanin		300.00
SBDC 2440 Tx Pkwy		256.00
<b>Medical Professional</b>	<b>\$</b>	<b>80,149.69</b>
Athletic Trainers		1,000.00

Campus Rec		500.00
CAPS		6,800.00
COLLEGE OF OPTOMETRY		41,000.00
Department of Communication Sciences & Disorders		1,000.00
Health Center		29,849.69
<b>Property</b>	<b>\$</b>	<b>2,634,631.21</b>
Risk Management		2,634,631.21
<b>Special Crime</b>	<b>\$</b>	<b>7,428.00</b>
Risk Management		7,428.00
<b>Special Events Liability</b>	<b>\$</b>	<b>9,282.00</b>
Risk Management		9,282.00
<b>Special Events Liability - Audit 2011/2012</b>	<b>\$</b>	<b>7,639.89</b>
ATHLETICS		7,608.17
Bauer College of Business		22.22
College of Architecture		4.75
LGBT Resource Center		4.75
<b>Student Professional</b>	<b>\$</b>	<b>9,693.00</b>
ATHLETICS		100.00
CAPS		65.00
COLLEGE OF OPTOMETRY		4,353.00
College of Pharmacy		2,885.00
COMD-Speech Language Pathologists		410.00
Dietician		250.00
Psychology		425.00
Social Work		1,205.00
<b>Grand Total</b>	<b>\$</b>	<b>3,648,020.89</b>

University of Houston System										
Estimated FY12 Endowment Income										
For FY2013 Budget Development										
PEOPLE SOFT						3 Year				
INCOME COST CENTER						Average	Est. FY12	FY11	FY12 - FY11	%
	Sp Type	Fund	Dept	Prog	Proj	Market Value	Income	Actual Income	Income Change	Change
<b>UNIVERSITY OF HOUSTON</b>										
UH Tier One Scholarship Quasi Endowment	46934	4028	H0026	H8097	NA	5,123,210	204,928	228,342	(23,414)	-10.25%
<b>SUBTOTAL ADVANCEMENT</b>						<b>5,123,210</b>	<b>204,928</b>	<b>228,342</b>	<b>(23,414)</b>	
Farfel, Esther Faculty Awards	17063	4042	H0001	D1463	NA	184,620	7,385	7,890	(505)	-6.40%
UH Quasi	18264	2076	H0001	F0757	NA	364,581	14,583	-	14,583	NA
Theresa M. Monaco Chair for the Provost	42810	4042	H0001	A8009	NA	658,789	26,352	27,970	(1,618)	-5.78%
Academic Priorities Endowment	48114	2076	H0001	F8166	NA	551,933	22,077	21,479	598	2.78%
<b>SUBTOTAL PRESIDENT</b>						<b>1,759,922</b>	<b>70,397</b>	<b>57,339</b>	<b>13,058</b>	
Athletics Scholarships	12167	4028	H0002	H2386	NA	2,102,710	84,108	94,307	(10,199)	-10.81%
Lilie Family-Baseball Schol Endow	16909	4028	H0002	H2393	NA	361,142	14,446	15,434	(988)	-6.40%
Athletics Scholarship Quasi Endowment	48285	4028	H0002	H8208	NA	353,542	14,142	15,109	(967)	-6.40%
William Douglas Allums Athletic Endowment	44788	4042	H0002	D8061	NA	270,591	10,824	9,898	926	9.36%
Engel, Mel Athletics	10841	4028	H0002	H2387	NA	171,877	6,875	7,345	(470)	-6.40%
Howard Greenwood Ath Football Schol Endow	16857	4028	H0002	H2384	NA	121,435	4,857	5,190	(333)	-6.42%
Charles & Mary Ellen Jones Athletic Scholarship Fund	17035	4028	H0002	H0404	NA	98,016	3,921	3,811	110	2.89%
Guy Lewis Ath Quasi Basketball Sch Endow	16865	4028	H0002	H2385	NA	74,953	2,998	3,171	(173)	-5.46%
Marilyn Hensley Athletic Schol Endow	10811	4028	H0002	H0408	NA	73,740	2,950	3,151	(201)	-6.38%
Smith, Bo & Josanna	16906	4028	H0002	H2390	NA	72,937	2,917	3,117	(200)	-6.42%
Butler, George	17043	4028	H0002	H0422	NA	62,056	2,482	2,652	(170)	-6.41%
Greenwood Women's Golf Schol Endow	10849	4028	H0002	H1058	NA	61,804	2,472	2,641	(169)	-6.40%
Boyaki Family Endowment	43735	4028	H0002	H8051	NA	58,326	2,333	1,342	991	73.85%
Tom Wilson Scholarship Endow	17042	4028	H0002	H0420	NA	46,781	1,871	1,999	(128)	-6.40%
Taxi Squad	17041	4028	H0002	H0418	NA	46,425	1,857	1,984	(127)	-6.40%
Murray Stinson Scholarship Endow	17040	4028	H0002	H0416	NA	42,373	1,695	1,785	(90)	-5.04%
Howard W. Greenwood Sch Quasi End in Athletics	44696	4028	H0002	H8093	NA	42,196	1,688	1,256	432	34.39%
Spain, Ken Scholarship End	16794	4028	H0002	H1052	NA	38,953	1,558	1,641	(83)	-5.06%
Basketball Scholarship Quasi Endow	16612	4028	H0002	H1060	NA	35,436	1,417	1,493	(76)	-5.09%
Football Scholarship Quasi Endow	13164	4028	H0002	H1048	NA	35,278	1,411	1,486	(75)	-5.05%
Jack Cannata Jr Ath Schol Endow	16866	4028	H0002	H2388	NA	31,889	1,276	1,344	(68)	-5.06%
James Lyle Scholarship Endow	16908	4028	H0002	H2392	NA	27,835	1,113	1,173	(60)	-5.12%
The Howie and Jamie Lorch Scholarship Endowment	17037	4028	H0002	H0410	NA	27,022	1,081	1,139	(58)	-5.09%
Gretta Stalsby Basketball End Schol	16920	4028	H0002	H2382	NA	22,835	913	962	(49)	-5.09%
Tilman Fertitta Schol Endow	16893	4028	H0002	H2389	NA	19,155	766	807	(41)	-5.08%
Jerry & Marge Crum Football Scholarship End	16907	4028	H0002	H2391	NA	13,690	548	577	(29)	-5.03%
Andre Ware Scholarship Endow	12162	4028	H0002	H1054	NA	13,469	539	564	(25)	-4.43%
Rauscher, Pierce, Refnes Ath Scholarship End	17039	4028	H0002	H0414	NA	12,225	489	515	(26)	-5.05%
Bill Yeoman Athletic Scholarship Endow	16910	4028	H0002	H2394	NA	9,991	400	414	(14)	-3.38%
Men's Athletics Scholarship Endow	16911	4028	H0002	H1050	NA	5,136	205	215	(10)	-4.65%
Women's Athletics Scholarship Endow	16611	4028	H0002	H1056	NA	2,155	86	89	(3)	-3.37%
<b>SUBTOTAL ATHLETICS</b>						<b>5,168,450</b>	<b>174,238</b>	<b>186,611</b>	<b>(12,373)</b>	
Hugh Roy & Lillie Cranz Cullen Dist Chairs Prof	48433	4046	H0607	A1893	NA	19,569,105	782,764	836,318	(53,554)	-6.40%
Moore's Presidential Priorities	48425	2076	H0607	F0759	NA	18,678,505	747,140	798,246	(51,106)	-6.40%
M. D. Anderson Foundation	48432	4042	H0607	A1899	NA	4,531,054	181,242	189,728	(8,486)	-4.47%
Franklin, Thomas & Richard Quasi	16372	4028	H0213	H1631	NA	3,342,566	133,703	142,850	(9,147)	-6.40%
Edmonds Foundation -UH	16771	4028	H0213	H0782	NA	2,599,729	103,989	111,085	(7,096)	-6.39%
Cullen Graduate Scholarships	33982	4028	H0442	H1669	NA	982,672	39,307	41,996	(2,689)	-6.40%
Lana A. Culpepper UH Tierone Scholarship Endowment	47084	4028	H0213	H8167	NA	551,933	22,077	21,479	598	2.78%
Delphian Scholarships	43974	4028	H0213	H9170	NA	358,419	14,337	15,318	(981)	-6.40%
Perkins, Robert B	16364	4028	H0213	H1612	NA	256,539	10,262	7,257	3,005	41.41%
Univ. Stud. Loan	40887	4028	H0213	H2912	NA	246,242	9,850	10,523	(673)	-6.40%
Albert & Ethel Herzstein UH TierOne Schol Endow	45835	4028	H0213	H8127	NA	124,383	4,975	4,297	678	15.78%
Allen, James Quasi	31725	4028	H0213	H2623	NA	120,589	4,824	4,919	(95)	-1.93%
Lee, Albert	16375	4028	H0213	H1639	NA	120,011	4,800	5,129	(329)	-6.41%
Dr. Kaye E. Stripling UH Tier One Sch Endowment	45171	4028	H0213	H8105	NA	110,767	4,431	4,304	127	2.95%

(1) Income Return to Principal.  
(2) Income cost center not yet available.

University of Houston System											
Estimated FY12 Endowment Income											
For FY2013 Budget Development											
PEOPLE SOFT						3 Year					
INCOME COST CENTER						Average	Est. FY12	FY11	FY12 - FY11		
	Sp Type	Fund	Dept	Prog	Proj	Market Value	Income	Actual Income	Income Change	%	
Cynthia & George Mitchell Fdn UH TierOne Sch End	45286	4028	H0213	H8113	NA	110,711	4,428	4,303	125	2.90%	
H E B UH TierOne Schol Endow	45937	4028	H0213	H8133	NA	110,651	4,426	4,302	124	2.88%	
Stadler, Robert & Esther	12090	4028	H0213	H1657	NA	98,538	3,942	4,211	(269)	-6.39%	
Alexander, Eric Philip	16519	4028	H0213	H1737	NA	88,717	3,549	3,674	(125)	-3.40%	
UH Alumni Assn TierOne Sch Endowment	44513	4028	H0213	H8089	NA	76,446	3,058	2,348	710	30.24%	
Mr & Mrs Robert Maxwell Jr UH TierOne Schol Endow	45593	4028	H0213	H8122	NA	66,318	2,653	2,579	74	2.87%	
Fitzgerald, Ruth	16468	4028	H0213	H1540	NA	57,716	2,309	2,467	(158)	-6.40%	
Jinnah, M. A.	40828	4028	H0213	H0810	NA	57,415	2,297	2,454	(157)	-6.40%	
International Student	16739	4028	H0217	H1312	NA	55,409	2,216	2,368	(152)	-6.42%	
Carey C. Stuart Presidential Endowed Fellowship	46667	4028	H0442	H8107	NA	55,344	2,214	2,151	63	2.93%	
Huang, Diane PES	38640	4028	H0442	H9623	NA	54,273	2,171	2,201	(30)	-1.36%	
York, Meredith & Miriam	43277	4028	H0007	H1735	NA	41,926	1,677	1,766	(89)	-5.04%	
Student Govt Scholarship	43445	4028	H0213	H3538	NA	41,118	1,645	1,732	(87)	-5.02%	
Inspiring Excellence Sch End Sponsored by Shell	44025	4028	H0213	H8058	NA	37,699	1,508	1,432	76	5.31%	
Canteen, Bus Svcs, Quasi End	41070	4028	H0213	H3492	NA	32,892	1,316	817	499	61.08%	
San Antonio Alumni PES	38516	4028	H0213	H2599	NA	32,086	1,283	1,309	(26)	-1.99%	
Burke, Jack & D'Ann	40825	4028	H0217	H1032	NA	28,663	1,147	1,208	(61)	-5.05%	
Eichhorn, Patricia	16571	4028	H0213	H1550	NA	22,709	908	940	(32)	-3.40%	
Nelson Esther Marion	17142	4028	H0213	H0568	NA	22,019	881	928	(47)	-5.06%	
Jerri Lee Pledger Scholarship Endowment	41818	4028	H0213	H9961	NA	19,537	781	635	146	22.99%	
Zimmer, Bill & Helen	16388	4028	H0213	H1719	NA	18,246	730	769	(39)	-5.07%	
Carole Hegenbarth Scholarship Endowment	43287	4028	H0213	H8021	NA	17,773	711	642	69	10.75%	
Breedlove, rote	40829	4028	H0213	H0976	NA	17,419	697	686	11	1.60%	
Foley, Kathryn Quasi	16821	4028	H0213	H0996	NA	17,259	690	727	(37)	-5.09%	
Faculty Senate Enhancement Endowment	44730	4042	H0008	D8033	NA	17,007	680	640	40	6.25%	
Monsignor George	13059	4028	H0213	H1552	NA	12,942	518	536	(18)	-3.36%	
Rizk, Fred Quasi	43446	4028	H0213	H9046	NA	10,824	433	456	(23)	-5.04%	
Truman & Becky Arnold UH TierOne Scholarship Endowment	45499	4028	H0213	H8121	NA	8,484	339	215	124	57.67%	
Computing Center	40830	4028	H0213	H0978	NA	1,316	53	55	(2)	-3.64%	
Dow Employees Schol	16363	4028	H0213	H1610	NA	735	29	31	(2)	-6.45%	
<b>Allocations (UH &amp; UHSA):</b>											
Prudential		4042	H0013	C0459	NA		1,565	1,672	(107)	-6.40%	
Bohner, Roswell		4028	H0213	H1614	NA		549	579	(30)	-5.10%	
Cullinan Endowment		4028	H0213	H1715	NA		8,512	9,046	(534)	-5.90%	
Cullen Leadership		4052	H0213	H0470	NA		24,991	26,558	(1,567)	-5.90%	
International Paper		4027	H0213	H0715	NA		12,497	13,277	(780)	-5.90%	
Roy & Lillie Cullen End		4040	H0607	F0751	NA		1,572,042	1,679,595	(107,553)	-6.40%	
<b>SUBTOTAL ACADEMIC AFFAIRS</b>						<b>66,664,361</b>	<b>3,733,146</b>	<b>4,206,603</b>	<b>(473,457)</b>		
KUHT Quasi Endow Reserve Fund <sup>(1)</sup>	35704	6065	H0650	C9093	NA	330,419	13,217	-	13,217	NA	
Sophie Pledger UH TierOne Schol Endow <sup>(1)</sup>	45667	4028	H0213	H8123	NA	22,462	898	736	162	22.01%	
Marvin & Joan Kaplan UH TierOne Scholarship Endow <sup>(1)</sup>	45939	4028	H0213	H8135	NA	16,941	678	430	248	57.67%	
Rose & William B. Calhoun UH TierOne Sch End <sup>(1)</sup>	45416	4028	H0213	H8116	NA	14,681	587	387	200	51.68%	
Roger & Victoria Berry UH TierOne Scholarship Endowment <sup>(1)</sup>	47031	4028	H0213	H8120	NA	13,019	521	451	70	15.52%	
UH Student Excell. <sup>(1)</sup>	10847	4028	H0213	H1006	NA	3,724	149	149	-	0.00%	
UH Faculty Excell. <sup>(1)</sup>	40827	4042	H0005	D3102	NA	2,131	85	85	-	0.00%	
Gaynelle Brock & Prem Bhushan Dewan Gadihoke UH TierOne End <sup>(1)</sup>	45415	4028	H0213	H8115	NA	7,149	286	184	102	55.43%	
UH Facilities Excel. <sup>(1)</sup>	20794	6061	H0650	G9001	NA	1,084	43	43	-	0.00%	
<b>SUBTOTAL ACADEMIC AFFAIRS</b>							<b>16,464</b>	<b>2,465</b>	<b>13,999</b>		
<b>TOTAL ACADEMIC AFFAIRS</b>							<b>3,749,610</b>	<b>4,209,068</b>	<b>(459,458)</b>		
Detering, Carl & William	16525	4028	H0024	H1703	NA	42,907	1,716	1,834	(118)	-6.43%	
SICSA/Japan Shipbuilding	40756	4042	H0024	D3074	NA	1,058,288	42,332	42,927	(595)	-1.39%	
Japan Shipbuilding	14120	4042	H0024	A1334	NA	2,946,448	117,858	123,376	(5,518)	-4.47%	
Barnstone Lecture Series - Architecture	48893	4042	H0024	C9017	NA	44,881	1,795	1,918	(123)	-6.41%	
CRSS/Aaron Farfel	10848	4028	H0024	H1038	NA	43,043	1,722	1,814	(92)	-5.07%	
Okumura, Roy	16899	4028	H0024	H1034	NA	13,581	543	572	(29)	-5.07%	
Architecture Alumni	17445	4042	H0024	D1161	NA	139,994	-	5,711	(5,711)	NA	
<b>SUBTOTAL ARCHITECTURE</b>						<b>7,618,020</b>	<b>165,966</b>	<b>178,152</b>	<b>(12,186)</b>		

(1) Income Return to Principal.  
(2) Income cost center not yet available.

University of Houston System											
Estimated FY12 Endowment Income											
For FY2013 Budget Development											
PEOPLE SOFT											
INCOME COST CENTER											
						3 Year					
						Average	Est. FY12	FY11	FY12 - FY11	% Change	
	Sp Type	Fund	Dept	Prog	Proj	Market Value	Income	Actual Income	Income Change	% Change	
Jones, Jesse Quasi	16615	4028	H0041	H1066	NA	5,605,422	224,217	239,557	(15,340)	-6.40%	
Baker Hughes Professorship	17669	4042	H0050	A1412	NA	932,969	37,319	39,846	(2,527)	-6.34%	
Elkins Professorship	16964	4042	H0047	A1897	NA	814,536	32,581	34,811	(2,230)	-6.41%	
Arthur Andersen Professorship	17673	4042	H0041	A1420	NA	653,204	26,128	27,353	(1,225)	-4.48%	
El Paso Corp - Ken Reese Dean's Excellence Endow	49236	4042	H0041	D8279	NA	501,836	20,073	21,429	(1,356)	-6.33%	
KPMG/Peat Marwick	36262	4042	H0041	A1446	NA	396,470	15,859	16,937	(1,078)	-6.36%	
Hurley, Marvin Professorship	17676	4042	H0041	A1424	NA	360,920	14,437	15,425	(988)	-6.41%	
Duncan Professorship	16961	4042	H0041	A1895	NA	329,024	13,161	14,061	(900)	-6.40%	
Hughes, Ruth	16914	4028	H0041	H0592	NA	321,123	12,845	13,299	(454)	-3.41%	
Grinaker, Robert Professorship	17667	4042	H0046	A1406	NA	315,650	12,626	13,477	(851)	-6.31%	
Daniels, Howard	37165	4028	H0041	H0504	NA	313,936	12,557	12,472	85	0.68%	
William Douglas Allums C.T. Bauer Business End	43880	4042	H0041	D3950	NA	270,591	10,824	9,898	926	9.36%	
Price Waterhouse Professorship	17436	4042	H0046	A1428	NA	254,074	10,163	10,853	(690)	-6.36%	
Gordon, Harry	16614	4028	H0041	H1064	NA	232,579	9,303	9,940	(637)	-6.41%	
JP Morgan Chase Professorship	17226	4042	H0041	A1932	NA	212,591	8,504	9,085	(581)	-6.40%	
Conn Appliances	42237	4042	H0041	A2245	NA	165,822	6,633	7,084	(451)	-6.37%	
The Minute Maid Company Foundation	16616	4028	H0041	H1068	NA	164,929	6,597	7,049	(452)	-6.41%	
Wells Fargo	37168	4028	H0041	H0790	NA	121,278	4,851	5,183	(332)	-6.41%	
Ross, Billy D	37166	4028	H0041	H0880	NA	114,857	4,594	4,909	(315)	-6.42%	
Halliburton	48286	4042	H0054	D8232	NA	110,940	4,438	4,741	(303)	-6.39%	
Payne, Wayne & Kathryn	13076	4042	H0041	D1175	NA	103,181	4,127	3,984	143	3.59%	
Keys A. & Joan F. Curry Endowed Excellence Fund	43937	4042	H0041	D3922	NA	94,803	3,792	693	3,099	447.19%	
Bank of America	16787	4028	H0041	H1022	NA	77,269	3,091	3,302	(211)	-6.39%	
Palmer, Marc	16684	4028	H0041	H1082	NA	67,317	2,693	2,877	(184)	-6.40%	
El Paso Corporation Scholarship Endowment	16685	4028	H0041	H1084	NA	66,939	2,678	2,861	(183)	-6.40%	
Texas Exec Women	37167	4028	H0041	H0850	NA	62,504	2,500	2,589	(89)	-3.44%	
Lilie Family-Entrepreneur	48289	4042	H0041	D8233	NA	61,177	2,447	2,534	(87)	-3.43%	
Laufman, Bill	16381	4028	H0041	H1653	NA	57,016	2,281	2,408	(127)	-5.27%	
Houst Fdn Cont Ed	16761	4028	H0041	H1020	NA	56,742	2,270	2,425	(155)	-6.39%	
Houston Cash Mgmt Assoc.	17026	4028	H0041	H0872	NA	50,172	2,007	1,848	159	8.60%	
Federation of Houston Women	37169	4028	H0041	H0950	NA	39,361	1,574	1,630	(56)	-3.44%	
Dr. Edward A. Blair Scholarship Endowment	46751	4028	H0041	H8096	NA	32,969	1,319	1,260	59	4.68%	
EMBA Teaching Excell	10785	4042	H0041	A1438	NA	30,637	1,225	1,291	(66)	-5.11%	
Techtrans International Scholarship Endowment	46750	4028	H0041	H8139	NA	29,049	1,162	1,075	87	8.09%	
Furman, Larry Scholarship	16599	4028	H0041	H0982	NA	23,146	926	959	(33)	-3.44%	
GPA Improvement	16789	4028	H0041	H0916	NA	22,213	889	930	(41)	-4.41%	
Richard & Dawn Rawson Sch End	38982	4028	H0041	H2857	NA	20,832	833	653	180	27.57%	
Voelkel, Stanley	48290	4042	H0046	D8231	NA	18,544	742	781	(39)	-4.99%	
Delta Sigma Pi	12177	4028	H0041	H0546	NA	18,523	741	698	43	6.16%	
Sloan, Everett	40761	4042	H0041	D3075	NA	16,923	677	712	(35)	-4.92%	
Gunter, Thomas Robert	14145	4028	H0041	H1671	NA	15,928	637	671	(34)	-5.07%	
Hispanic Bus Student Assoc	16795	4028	H0041	H0932	NA	22,612	-	896	(896)	NA	
Cook-Price, Elaine	27237	4028	H0041	H2556	NA	25,055	-	945	(945)	NA	
Rodriguez, Robert	27303	4028	H0041	H2560	NA	10,141	-	414	(414)	NA	
UHY Mann Frankfort & Lipp	37217	4028	H0041	H9787	NA	45,277	-	1,569	(1,569)	NA	
Henry and Tanya Matula Endowment	42775	4042	H0041	D3786	NA	9,246	-	279	(279)	NA	
Robin French Family Scholarship Endowment	43407	4028	H0041	H3696	NA	17,387	-	558	(558)	NA	
Cemo, Michael Professorship	34051	4042	H0049	A9727	NA	122,531	-	4,970	(4,970)	NA	
<b>Allocations (UH &amp; UHSA):</b>											
Prudential		4028	H0041	H1026	NA		1,565	1,672	(107)	-6.40%	
Gordon, Aron Scholarship		4028	H0041	H1072	NA		5,852	6,252	(400)	-6.40%	
Leroy & Lucille Melcher End		4042	H0041	D9088	NA		135,367	144,629	(9,262)	-6.40%	
Leroy & Lucille Melcher End		4042	H0041	D4124	NA		91,065	97,296	(6,231)	-6.40%	
Leroy & Lucille Melcher End		4028	H0041	H0572	NA		19,689	21,037	(1,348)	-6.40%	
<b>SUBTOTAL BAUER COLLEGE OF BUSINESS</b>						<b>47,794,923</b>	<b>779,859</b>	<b>834,107</b>	<b>(54,248)</b>		
Bauer Alumni Assn Scholarship Endowment <sup>(1)</sup>	44486	4028	H0041	H3728	NA	8,604	344	317	27	8.52%	
Sai Hoon Lim Scholarship Endowment <sup>(1)</sup>	46968	4028	H0041	H8165	NA	6,806	272	258	14	5.43%	
Williams Group Inspiring Excellence Sch End <sup>(1)</sup>	43408	4028	H0041	H3697	NA	4,466	179	168	11	6.55%	
Quinones, Charles John Schol. <sup>(1)</sup>	32285	4028	H0041	H2627	NA	4,403	176	176	-	0.00%	
<b>SUBTOTAL BAUER COLLEGE OF BUSINESS</b>							<b>971</b>	<b>919</b>	<b>52</b>		
<b>TOTAL BAUER COLLEGE OF BUSINESS</b>							<b>780,830</b>	<b>835,026</b>	<b>(54,196)</b>		

(1) Income Return to Principal.  
(2) Income cost center not yet available.



University of Houston System											
Estimated FY12 Endowment Income											
For FY2013 Budget Development											
PEOPLE SOFT						3 Year					
INCOME COST CENTER						Average	Est. FY12	FY11	FY12 - FY11	%	
	Sp Type	Fund	Dept	Prog	Proj	Market Value	Income	Actual Income	Income Change	Change	
Oberholtzer, EE & Myrtle	10774	4028	H0058	H1635	NA	103,087	4,123	4,388	(265)	-6.04%	
Hollingsworth, Marcile Schol.	32837	4028	H0058	H2631	NA	62,903	2,516	2,177	339	15.57%	
Weinstein, Joshua Scholarship	40769	4028	H0058	H2901	NA	47,992	1,920	2,051	(131)	-6.39%	
Durham, Mylie & Charles	17530	4028	H0058	H0361	NA	47,190	1,888	2,017	(129)	-6.40%	
Butler, Mary McCullough	16890	4028	H0062	H0918	NA	36,483	1,459	1,537	(78)	-5.07%	
John D. & Susan K. Thompson Family Sch End	44480	4028	H0058	H3727	NA	21,009	840	799	41	5.13%	
Crouch, Pauline Moss	16870	4028	H0061	H0852	NA	18,436	737	772	(35)	-4.53%	
Croft, John	17525	4028	H0061	H0357	NA	18,176	727	766	(39)	-5.09%	
Capobianco, Rudolph	40774	4028	H0062	H0739	NA	17,110	684	721	(37)	-5.13%	
Marshall, Faith Gladstone	16702	4028	H0058	H1108	NA	15,828	633	663	(30)	-4.52%	
Harper, Mabel Jewel	40768	4028	H0058	H2900	NA	15,520	621	642	(21)	-3.27%	
Administaff	16701	4028	H0058	H1106	NA	13,458	538	567	(29)	-5.11%	
Strahan, Richard	14164	4028	H0058	H1112	NA	13,351	534	538	(4)	-0.74%	
Wilford Weber Memorial Scholarship End	43983	4028	H0058	H3710	NA	11,903	476	445	31	6.97%	
Lopez, Joe Scholarship	30486	4028	H0058	H9655	NA	10,812	432	448	(16)	-3.57%	
Weltzien Endowed Scholarship	44481	4028	H0058	H3726	NA	8,363	335	317	18	5.68%	
College of Education Alumni Assn Sch End #2	44033	4028	H0058	H3714	NA	5,940	238	129	109	84.50%	
College Of Educ Alumni Endow	12160	4028	H0058	H1120	NA	21,840	-	886	(886)	NA	
Mountain, Joe & Lee Scholar.	34992	4028	H0058	H9678	NA	80,171	-	2,669	(2,669)	NA	
Don & Jacqueline Hawkins Endowed Scholarship	44222	4028	H0058	H3723	NA	4,170	-	32	(32)	NA	
Helen & Melvin Wimpelberg Memorial Sch Endowment	46641	4028	H0058	H8146	NA	31,741	-	1,234	(1,234)	NA	
Lilie Family-Early Childhood	48292	4042	H0058	D8237	NA	94,233	3,769	3,903	(134)	-3.43%	
Lechenger, Barbara	40770	4042	H0058	B1842	NA	92,608	3,704	3,958	(254)	-6.42%	
Antje & Harry Gee Jr Endowment in the Asian American Studies Ctr	45947	4042	H0061	D8136	NA	66,391	2,656	2,581	75	2.91%	
Faculty Growth & Dev Quasi	40771	4042	H0058	D3079	NA	34,549	1,382	1,456	(74)	-5.08%	
Asian Pacific American Heritage Assn Sch End	50006	4042	H0061	D9231	NA	18,970	759	799	(40)	-5.01%	
Benbrook/Foerster	40766	4042	H0058	D3078	NA	16,811	672	708	(36)	-5.08%	
Wiley, Mary	40775	4042	H0062	D3080	NA	15,741	630	663	(33)	-4.98%	
Lawson, French W.	40767	4042	H0058	B1243	NA	13,505	540	569	(29)	-5.10%	
Marcile Hollingsworth Science Educ.	48295	4042	H0062	D9688	NA	10,769	431	439	(8)	-1.82%	
June Smith Early Childhood Development	48294	4042	H0058	D9699	NA	9,932	-	403	(403)	NA	
<b>SUBTOTAL EDUCATION</b>						<b>2,055,791</b>	<b>33,244</b>	<b>47,335</b>	<b>(14,075)</b>		
Dr. Walter Cubberly Memorial Fellowship Endowment <sup>(1)</sup>	46631	4028	H0058	H8153	NA	21,227	849	803	46	5.73%	
<b>TOTAL EDUCATION</b>							<b>34,093</b>	<b>48,138</b>	<b>(14,029)</b>		
Cullen Eng Schol	16808	4028	H0066	H0690	NA	2,691,991	107,680	115,047	(7,367)	-6.40%	
Cullen Eng. Prof.	40783	4042	H0067	A2206	NA	968,871	38,755	41,406	(2,651)	-6.40%	
<b>Bill D Cook Faculty Scholars Endow</b>	<b>48296</b>	<b>4042</b>	<b>H0073</b>	<b>D9312</b>	<b>NA</b>	<b>442,015</b>	<b>36,000</b>	<b>36,000</b>	<b>-</b>	<b>0.00%</b>	
William C. Miller End Chair of ENGR honor Prof Charles Kirkpatrick	41918	4042	H0066	A2242	NA	712,006	28,480	17,665	10,815	61.22%	
Gillingham, W. J.	40779	4042	H0066	D3082	NA	624,772	24,991	26,701	(1,710)	-6.40%	
Dunn, John Professorship	31843	4042	H0066	A9663	NA	610,457	24,418	25,281	(863)	-3.41%	
Dow Professorship	17474	4042	H0067	A1510	NA	389,178	15,567	16,632	(1,065)	-6.40%	
Chevron Scholarship Endowment	12092	4028	H0066	H1693	NA	322,889	12,916	13,799	(883)	-6.40%	
American Petroleum Inst	16747	4028	H0066	H0936	NA	307,292	12,292	12,267	25	0.20%	
O'Leary, Mr. & Mrs. John	40778	4042	H0066	D3081	NA	303,895	12,156	12,987	(831)	-6.40%	
Spe-Gulf Coast Section College End Professorship	46670	4042	H0067	A8098	NA	277,481	11,099	10,773	326	3.03%	
Baldwin, R.W.	16526	4028	H0066	H1705	NA	236,169	9,447	10,093	(646)	-6.40%	
Thomas & Vera Stufflebeen	16716	4028	H0066	H1190	NA	119,459	4,778	4,947	(169)	-3.42%	
Henley, Ernest & Barbara Prof	36227	4042	H0067	A9794	NA	116,727	4,669	4,064	605	14.89%	
Cobb Fendley Schol	16683	4028	H0068	H1178	NA	64,984	2,599	2,776	(177)	-6.38%	
Power, Douglas & Jeannette	16791	4028	H0066	H1156	NA	56,674	2,267	-	2,267	NA	
Hsu, Thomas Structural Res	40782	4042	H0068	B1843	NA	55,160	2,206	2,250	(44)	-1.96%	
Engineering Schl. Quasi	16924	4028	H0066	H0723	NA	53,136	2,125	2,271	(146)	-6.43%	
Brij & Sunita Agrawal Fac Fellow Industrial Engr	43892	4042	H0072	D3919	NA	50,010	2,000	1,349	651	48.26%	
Porter, Leonard	16633	4028	H0066	H1148	NA	37,593	1,504	1,584	(80)	-5.05%	
Margie Nell Eaves Seiver Scholarship End	42145	4028	H0066	H3007	NA	32,772	1,311	803	508	63.26%	
American Chapter of the Amer Concrete Inst Endowed Schol	46937	4028	H0068	H8155	NA	27,712	1,108	1,077	31	2.88%	
McNeese, Bill & Gail	16698	4028	H0066	H1184	NA	24,520	981	1,015	(34)	-3.35%	

(1) Income Return to Principal.  
(2) Income cost center not yet available.

University of Houston System											
Estimated FY12 Endowment Income											
For FY2013 Budget Development											
PEOPLE SOFT						3 Year					
INCOME COST CENTER						Average	Est. FY12	FY11	FY12 - FY11		
	Sp Type	Fund	Dept	Prog	Proj	Market Value	Income	Actual Income	Income Change	%	
Anderson, Pat	16595	4028	H0068	H0972	NA	21,562	862	908	(46)	-5.07%	
Barr, Betty Scholarship	16679	4028	H0070	H1170	NA	14,327	573	577	(4)	-0.69%	
Meier, Wilber & Judy	13901	4028	H0066	H0369	NA	9,829	393	414	(21)	-5.07%	
Dukler, Abraham	10855	4028	H0066	H1180	NA	4,034	161	165	(4)	-2.42%	
Klotz Associates	16717	4028	H0066	H1192	NA	62,774	-	2,411	(2,411)	NA	
Cobb/Fendley	16719	4028	H0066	H1196	NA	71,733	-	2,926	(2,926)	NA	
Holder, Cecil & Louise	10532	4028	H0066	H2497	NA	194,525	-	7,404	(7,404)	NA	
Kirkpatrick, C. V. Engineering	27235	4028	H0066	H2557	NA	42,087	-	863	(863)	NA	
Lohec, Ronald & Bertha	29006	4028	H0066	H2586	NA	91,707	-	3,264	(3,264)	NA	
Cobb/Fendley Excellence	30435	4042	H0066	D9660	NA	45,548	-	1,858	(1,858)	NA	
Baker Hughes Engineering Schol.	32918	4028	H0066	H9697	NA	49,663	-	2,014	(2,014)	NA	
Simon Yee On Chow Endowed Scholarship	43840	4028	H0066	H3705	NA	88,225	-	3,393	(3,393)	NA	
Society of Iranian American Women for Education	43430	4028	H0066	H3699	NA	20,002	-	554	(554)	NA	
Dr. Victor A. Zaloom Scholarship Endowment	43431	4028	H0066	H3700	NA	16,284	-	554	(554)	NA	
Dept of Chem & Biomolecular Engr Founders' Sch	43598	4028	H0067	H3704	NA	14,116	-	543	(543)	NA	
Omron Fdn, Inc. Endowed Sch in Electrical Engineering	46348	4028	H0070	H8145	NA	33,054	-	1,072	(1,072)	NA	
<b>Allocations (UH &amp; UHSA):</b>											
Doss, R.P.		4028	H0066	H1162	NA		680	716	(36)	-5.00%	
<b>SUBTOTAL ENGINEERING</b>						<b>10,928,972</b>	<b>362,018</b>	<b>390,423</b>	<b>(28,405)</b>		
Dr Wallace Lee Anderson Schol Endow in Electrical Engr <sup>(1)</sup>	45819	4028	H0070	H3782	NA	2,148	86	78	8	10.26%	
Medh, Urvish <sup>(1)</sup>	16680	4028	H0070	H1172	NA	10,187	407	381	26	6.82%	
McInnis, Bayliss <sup>(1)</sup>	16819	4028	H0066	H0988	NA	5,918	237	237	-	0.00%	
Kent, Herb <sup>(1)</sup>	16634	4028	H0066	H1150	NA	5,660	226	227	(1)	-0.44%	
Hari & Anjali Agrawal Faculty Fellowship <sup>(1)</sup>	41741	4042	H0072	D3187	NA	34,850	-	1,128	(1,128)	NA	
<b>SUBTOTAL ENGINEERING</b>							<b>956</b>	<b>2,051</b>	<b>(1,095)</b>		
<b>TOTAL ENGINEERING</b>							<b>362,974</b>	<b>392,474</b>	<b>(29,500)</b>		
Carolyn Grant Fay	12210	4042	H0078	D1467	NA	1,483,999	59,360	61,457	(2,097)	-3.41%	
Honors Program Quasi	40791	4042	H0078	D3084	NA	151,780	6,071	6,487	(416)	-6.41%	
Ted L. Estess Faculty Award Endowment	43912	4042	H0078	D8066	NA	21,077	843	797	46	5.77%	
Matthew B. & Tamara Steele Faculty Award End	43913	4042	H0078	D8055	NA	16,034	641	432	209	48.38%	
Cizik, Jane Morin Chair	48298	4042	H0078	A9047	NA	522,230	-	21,303	(21,303)	NA	
Honors Fellows Program Endowment	42863	4042	H0078	D3796	NA	685,772	-	27,974	(27,974)	NA	
Honors Undergrad Research	40794	4042	H0078	D3085	NA	81,024	-	3,355	(3,355)	NA	
Honors Study Abroad Endow	40795	4042	H0078	D3086	NA	81,030	-	3,355	(3,355)	NA	
Temple-Honors Coll	16572	4028	H0078	H1554	NA	331,945	13,278	14,186	(908)	-6.40%	
Hearst, William Randolph	40793	4028	H0078	H1560	NA	327,048	13,082	13,266	(184)	-1.39%	
Dr. Ted L. Estess Honors Scholarship Endowment	43118	4028	H0078	H8025	NA	87,047	3,482	2,662	820	30.80%	
Cooper Industries	14152	4028	H0078	H1548	NA	69,947	2,798	2,947	(149)	-5.06%	
Moya Family Scholarship Endowment in Honors	43915	4028	H0078	H8067	NA	63,232	2,529	2,391	138	5.77%	
Dyer, Everett	16568	4028	H0078	H1542	NA	62,570	2,503	2,674	(171)	-6.39%	
Fred & Mabel R. Parks Fdn End	42520	4028	H0078	H9994	NA	59,885	2,395	1,716	679	39.57%	
Monsanto End/Honor	16656	4028	H0078	H1566	NA	12,498	500	508	(8)	-1.57%	
Coastal Securities - Honors	40792	4028	H0078	H1558	NA	10,576	423	438	(15)	-3.42%	
McMillian/Gerstacker Schol	16664	4028	H0078	H1518	NA	15,225	-	557	(557)	NA	
Michelle & Ed Noack Sch End	40082	4028	H0078	H2885	NA	21,537	-	504	(504)	NA	
<b>Allocations (UH &amp; UHSA):</b>											
Autrey		4028	H0078	H1697	NA		9,678	10,340	(662)	-6.40%	
<b>SUBTOTAL HONORS</b>						<b>6,056,351</b>	<b>117,583</b>	<b>177,482</b>	<b>(59,899)</b>		
Olga & Gerardo Balboa Scholarship Endowment <sup>(1)</sup>	44412	4028	H0078	H3725	NA	11,776	471	371	100	26.95%	
<b>TOTAL HONORS</b>							<b>118,054</b>	<b>177,853</b>	<b>(59,799)</b>		
Wyllys K & Becky Bliss Schol Endowment	16512	4028	H0081	H1725	NA	278,291	11,132	8,919	2,213	24.81%	
Houston Restaurant Assoc.	11997	4028	H0081	H1342	NA	170,439	6,818	6,638	180	2.71%	
Look, Mary	16523	4028	H0081	H1699	NA	143,225	5,729	6,121	(392)	-6.40%	
HRM Dean's Scholarship	16628	4028	H0081	H0802	NA	127,015	5,081	5,404	(323)	-5.98%	
Forehand, Larry	16589	4028	H0080	H1352	NA	117,017	4,681	4,930	(249)	-5.05%	
Texas Hotel & Motel	16583	4028	H0081	H2432	NA	116,229	4,649	4,813	(164)	-3.41%	

(1) Income Return to Principal.  
(2) Income cost center not yet available.

University of Houston System											
Estimated FY12 Endowment Income											
For FY2013 Budget Development											
PEOPLE SOFT											
INCOME COST CENTER											
						3 Year					
						Average	Est. FY12	FY11	FY12 - FY11	%	
						Market Value	Income	Actual Income	Income Change	Change	
	Sp	Type	Fund	Dept	Prog	Proj					
Garbett, Rosemary	16524	4028	H0081	H1701	NA		90,714	3,629	3,877	(248)	-6.40%
Brinker International	16498	4028	H0081	H1376	NA		86,195	3,448	3,516	(68)	-1.93%
Pappas, Gregory James	16500	4028	H0080	H1384	NA		63,568	2,543	2,633	(90)	-3.42%
Pappas Restaurant	16501	4028	H0080	H1386	NA		63,568	2,543	2,633	(90)	-3.42%
Rappole - Sheridan	16590	4028	H0080	H1356	NA		61,623	2,465	-	2,465	NA
Davis, Edward C.	16988	4028	H0081	H0460	NA		53,883	2,155	2,303	(148)	-6.43%
Wilson, Herbert O.	16474	4028	H0080	H1358	NA		39,133	1,565	1,649	(84)	-5.09%
Rolston, Leonard	13167	4028	H0081	H0888	NA		36,858	1,474	1,551	(77)	-4.96%
Natl Assoc Of Catering	10764	4028	H0081	H1380	NA		32,126	1,285	1,330	(45)	-3.38%
Assoc. Bldg. Services/Parker	16513	4028	H0081	H1727	NA		30,374	1,215	1,272	(57)	-4.48%
Par Excellence Scholarship	16861	4028	H0081	H0836	NA		30,367	1,215	1,298	(83)	-6.39%
Wyatt, Earle	16984	4028	H0081	H0576	NA		28,758	1,150	1,212	(62)	-5.12%
Dobson, Harmon	10862	4028	H0080	H1354	NA		28,119	1,125	1,164	(39)	-3.35%
Hardy, Scott	16855	4028	H0081	H0544	NA		23,987	959	1,004	(45)	-4.48%
Sutherland, J.P.	16885	4028	H0081	H0896	NA		23,027	921	970	(49)	-5.05%
Bombaywala, Ghulam	16588	4028	H0081	H1350	NA		19,266	771	812	(41)	-5.05%
Waskey, Ted	16587	4028	H0081	H1348	NA		16,644	666	698	(32)	-4.58%
Lattin, Gerald	16586	4028	H0081	H1346	NA		15,906	636	670	(34)	-5.07%
Tomac, Peter J. for HRM	16841	4028	H0081	H0508	NA		15,095	604	632	(28)	-4.43%
Pritchard, C Victor	16820	4028	H0081	H0992	NA		14,934	597	625	(28)	-4.48%
Gourmet Night	16488	4028	H0081	H1370	NA		12,113	485	510	(25)	-4.90%
Fischer, Jo	16585	4028	H0081	H1344	NA		6,968	279	294	(15)	-5.10%
McNeill, Charles	14169	4028	H0081	H0990	NA		3,432	137	145	(8)	-5.52%
Nat Hart	16487	4028	H0081	H1368	NA		26,199	-	1,069	(1,069)	NA
HRM Houston Livestock	16476	4028	H0081	H1362	NA		128,813	-	5,255	(5,255)	NA
Ray A. Kroc Schol Endow	16581	4028	H0081	H1338	NA		19,785	-	807	(807)	NA
Carlson Nelson Scholarship	28122	4028	H0081	H9620	NA		208,657	-	8,225	(8,225)	NA
Simmons, Lonnie Scholarship	28945	4028	H0081	H2585	NA		20,517	-	832	(832)	NA
Fred Parks Wine Cellar	35118	4042	H0081	D2818	NA		152,762	6,110	6,232	(122)	-1.96%
Greenaway, Donald	40797	4042	H0081	D3087	NA		52,513	2,101	2,244	(143)	-6.37%
Hospitality Industry Diversity Inst.	40798	4042	H0081	D1239	NA		44,913	1,797	-	1,797	NA
Meat Science	35119	4042	H0081	A2097	NA		10,281	411	433	(22)	-5.08%
<b>SUBTOTAL HOTEL &amp; RESTAURANT MANAGEMENT</b>							<b>3,299,177</b>	<b>80,376</b>	<b>98,540</b>	<b>(18,164)</b>	
Hirsch, Winifred & Maurice	12154	4028	H0090	H1220	NA		10,727,526	429,101	431,195	(2,094)	-0.49%
Moore's Fellowships	13896	4028	H0090	H0373	NA		1,869,859	74,794	79,911	(5,117)	-6.40%
Wortham Chair	17369	4042	H0082	A1608	NA		1,797,424	71,897	76,816	(4,919)	-6.40%
African American Studies End Chair	10609	5022	H0089	A0001	G004545		1,444,585	57,783	-	57,783	NA
Cain Scholarship - UH	16517	4028	H0095	H1733	NA		1,188,625	47,545	50,798	(3,253)	-6.40%
Hispanic Literature Chair	48303	4042	H0504	A9051	NA		1,137,265	45,491	47,098	(1,607)	-3.41%
Hobby Center for Public Policy Quasi Endowment	48233	4042	H0128	D8164	NA		1,132,321	45,293	43,988	1,305	2.97%
Edythe Bates Old Quasi	36165	4042	H0090	D3560	NA		900,626	36,025	37,298	(1,273)	-3.41%
Moore's Professorship	17353	4042	H0090	A1642	NA		690,934	27,637	28,614	(977)	-3.41%
Houston Professorship	12310	4042	H0086	A1614	NA		687,693	27,508	29,390	(1,882)	-6.40%
Miller, Murray Scholarships	16387	4028	H0089	H1717	NA		579,248	23,170	24,755	(1,585)	-6.40%
Madison Quasi Professorship at the Moore's Sch of Music	48172	4042	H0090	A8130	NA		553,254	22,130	21,509	621	2.89%
Blaffer Gallery	40818	4042	H0097	D3099	NA		547,537	21,901	23,400	(1,499)	-6.41%
West, Neva & Wesley	14160	4028	H0090	H1246	NA		365,571	14,623	15,139	(516)	-3.41%
Kenneth Lay Economics Prof	17316	4042	H0122	A1824	NA		353,919	14,157	15,125	(968)	-6.40%
John A. Beck	16604	4028	H0087	H1278	NA		350,346	14,014	14,509	(495)	-3.41%
Kenneth Lay Professorship	17213	4042	H0124	A1804	NA		334,497	13,380	14,295	(915)	-6.40%
Ross Lence Dist Univ Teaching Chair	40820	4042	H0124	A2214	NA		274,487	10,979	11,134	(155)	-1.39%
William Douglas Allums Band Endowment	43951	4042	H0447	D8062	NA		270,591	10,824	9,898	926	9.36%
Mont H. Jr. & Jane Goldston End Grad Fellowship	48170	4028	H0125	H8101	NA		250,057	10,002	9,703	299	3.08%
Graham Professorship in Econ	40819	4042	H0122	A2213	NA		240,411	9,616	10,275	(659)	-6.41%
Pelton, Barry C.	40777	4028	H0065	H0355	NA		13,997	560	590	(30)	-5.08%
Flaxman Art Scholarship	16510	4028	H0083	H1687	NA		194,882	7,795	8,329	(534)	-6.41%
Schissler Foundation	16670	4028	H0090	H1228	NA		186,755	7,470	7,952	(482)	-6.06%
Henderson, Sen. Don Quasi	35450	4042	H0082	D1365	NA		179,752	7,190	7,573	(383)	-5.06%
Grant, Richard	16561	4028	H0090	H1250	NA		156,474	6,259	6,687	(428)	-6.40%
Center Public Policy Quasi	40209	4042	H0128	D1471	NA		155,590	6,224	6,649	(425)	-6.39%

(1) Income Return to Principal.  
(2) Income cost center not yet available.

University of Houston System											
Estimated FY12 Endowment Income											
For FY2013 Budget Development											
PEOPLE SOFT						3 Year					
INCOME COST CENTER						Average	Est. FY12	FY11	FY12 - FY11	%	
	Sp Type	Fund	Dept	Prog	Proj	Market Value	Income	Actual Income	Income Change	Change	
School Of Music Quasi	12174	4028	H0090	H0743	NA	141,337	5,653	6,040	(387)	-6.41%	
MacNaughton, John	12091	4028	H0125	H1683	NA	135,967	5,439	5,745	(306)	-5.33%	
Old, Edith Bates Prof. Quasi	36880	4042	H0090	A9750	NA	128,801	5,152	5,224	(72)	-1.38%	
Bishop, Charles & Dorothy	40811	4028	H0090	H2905	NA	116,222	4,649	4,967	(318)	-6.40%	
Lack, Abram	40812	4042	H0090	D3094	NA	110,020	4,401	4,702	(301)	-6.40%	
Dr. Tatcho Mindiola Director's Endow for CMAS	43737	4042	H0095	D8054	NA	107,506	4,300	2,685	1,615	60.15%	
Guenther, Peter Quasi	40210	4028	H0083	H0745	NA	90,138	3,606	3,845	(239)	-6.22%	
Sanders, Don A.	35433	4028	H0082	H1478	NA	85,621	3,425	3,546	(121)	-3.41%	
Delphian-Children's Theatre	17138	4042	H0085	C0530	NA	74,163	2,967	3,170	(203)	-6.40%	
Delphian-Shakespeare Festival	17137	4042	H0085	C0528	NA	74,163	2,967	3,170	(203)	-6.40%	
Blain, LaRuth	16602	4028	H0083	H1272	NA	70,131	2,805	2,997	(192)	-6.41%	
Gallagher, Jack	17145	4028	H0084	H0574	NA	69,789	2,792	2,983	(191)	-6.40%	
Public History Quasi	43941	4042	H0517	D3093	NA	66,991	2,680	2,863	(183)	-6.39%	
Sheeler, John Rubin	16471	4028	H0094	H1711	NA	62,277	2,491	2,662	(171)	-6.42%	
LULAC	42236	4028	H0095	H1679	NA	60,594	2,424	2,590	(166)	-6.41%	
Wilson, Trey	40215	4028	H0085	H0920	NA	56,034	2,241	2,394	(153)	-6.39%	
Osborn, Bart Industrial Org	40234	4028	H0125	H0492	NA	55,718	2,229	2,226	3	0.13%	
Katims, Milton	14146	4028	H0090	H1723	NA	53,911	2,156	2,304	(148)	-6.42%	
Lack Music	16514	4028	H0090	H1691	NA	53,485	2,139	2,286	(147)	-6.43%	
Judith Morris Art	48304	4042	H0083	D8238	NA	52,438	2,098	2,139	(41)	-1.92%	
Van Horn, Sue	16871	4028	H0090	H0854	NA	51,189	2,048	2,172	(124)	-5.71%	
Burr, Ruth	16516	4028	H0090	H1731	NA	51,162	2,046	2,186	(140)	-6.40%	
Danberg, Debra	35435	4028	H0082	H1482	NA	49,979	1,999	2,136	(137)	-6.41%	
Callicut, Laurie Quasi	16931	4028	H0125	H0624	NA	47,448	1,898	2,028	(130)	-6.41%	
Alkek-Williams Music	16606	4028	H0090	H1282	NA	43,247	1,730	1,764	(34)	-1.93%	
Arnold, Genevieve Com Disord	40217	4028	H0087	H9647	NA	43,226	1,729	1,763	(34)	-1.93%	
Lence Distinguished Chair Quasi	40820	4042	H0124	A2214	NA	43,071	1,723	1,804	(81)	-4.49%	
Pickett, Cecil	40214	4028	H0085	H1016	NA	42,448	1,698	1,814	(116)	-6.39%	
Cheryl M. Carlucci Scholarship Endowment	43418	4028	H0082	H8042	NA	40,511	1,620	721	899	124.69%	
Sarofim, Louisa	17288	4042	H0090	A1680	NA	38,115	1,525	1,606	(81)	-5.04%	
Chertok, Nancy	16636	4028	H0090	H0814	NA	35,790	1,432	1,482	(50)	-3.37%	
Claridge, Ruth	16669	4028	H0090	H1226	NA	35,728	1,429	1,505	(76)	-5.05%	
Arnold, Genevieve Psychology	30177	4028	H0125	H2609	NA	32,419	1,297	1,322	(25)	-1.89%	
Morris Gentile Mem.	16744	4028	H0086	H1222	NA	31,581	1,263	1,331	(68)	-5.11%	
Battin, Tom	16596	4028	H0084	H0974	NA	30,865	1,235	1,250	(15)	-1.20%	
Claridge, Hester	40218	4028	H0090	H0566	NA	29,590	1,184	1,247	(63)	-5.05%	
Choate, Gary & Palmer, Marc	16607	4028	H0083	H1284	NA	29,527	1,181	1,223	(42)	-3.43%	
MCI Telecommunications	40802	4042	H0084	D3090	NA	29,537	1,181	1,245	(64)	-5.14%	
Head, Jeremy	16562	4028	H0090	H1252	NA	28,853	1,154	1,196	(42)	-3.51%	
Benito Torres Endowed Scholarship in CMAS	16603	4028	H0095	H1274	NA	28,518	1,141	1,158	(17)	-1.47%	
Hayden, Carlos	16534	4028	H0123	H1468	NA	27,803	1,112	1,171	(59)	-5.04%	
Debbie Haley Mem Schol Quasi Endow in African Amer Studies	45828	4028	H0094	H3003	NA	27,599	1,104	1,074	30	2.79%	
Patterson, Claire North Scholarship	30996	4028	H0090	H9667	NA	27,227	1,089	1,111	(22)	-1.98%	
Hirsh, Albert	17140	4028	H0090	H0560	NA	27,074	1,083	1,141	(58)	-5.08%	
Hadad, Daniel	14032	4028	H0123	H0596	NA	25,462	1,018	1,073	(55)	-5.13%	
History	40809	4042	H0089	D3092	NA	25,364	1,015	1,069	(54)	-5.05%	
English Scholarships Quasi	16373	4028	H0086	H1633	NA	23,823	953	1,004	(51)	-5.08%	
Howard Family "Inspiring Excellence" End	43978	4028	H0087	H8070	NA	23,640	946	781	165	21.13%	
Calderon, Elizabeth	10858	4028	H0084	H1258	NA	23,415	937	970	(33)	-3.40%	
Walker, Hap	40233	4028	H0123	H0994	NA	23,248	930	980	(50)	-5.10%	
Latin Amer Schol Quasi	16384	4028	H0089	H1663	NA	22,549	902	950	(48)	-5.05%	
Douthitt, Helen Scholarship	16509	4028	H0089	H1685	NA	21,728	869	915	(46)	-5.03%	
Lepow, Dr. Ronald	35442	4028	H0082	H2424	NA	21,598	864	910	(46)	-5.05%	
J. Scott Chase Endowment in Opera	44723	4042	H0090	D8052	NA	21,098	844	805	39	4.84%	
Galveston Musical	40222	4028	H0090	H1018	NA	21,044	842	887	(45)	-5.07%	
Winius/Brandon/Blumberg	16470	4028	H0084	H1709	NA	20,666	827	871	(44)	-5.05%	
Lack, Jean Preston	40220	4028	H0090	H0882	NA	20,285	811	849	(38)	-4.48%	
Marlatt E.E.	16888	4028	H0123	H0906	NA	20,264	811	854	(43)	-5.04%	
Speech Scholarship Quasi	16377	4028	H0084	H1643	NA	20,059	802	845	(43)	-5.09%	
McCary, John Leslie	16508	4028	H0125	H1681	NA	19,934	797	840	(43)	-5.12%	
Cooper, Sara	40221	4028	H0090	H0914	NA	18,224	729	768	(39)	-5.08%	
Day, Martin & Betty	16762	4028	H0086	H0864	NA	18,043	722	760	(38)	-5.00%	

(1) Income Return to Principal.  
(2) Income cost center not yet available.

University of Houston System											
Estimated FY12 Endowment Income											
For FY2013 Budget Development											
PEOPLE SOFT						3 Year					
INCOME COST CENTER						Average	Est. FY12	FY11	FY12 - FY11		
	Sp Type	Fund	Dept	Prog	Proj	Market Value	Income	Actual Income	Income Change	%	
Silin, Charles	10775	4028	H0092	H1665	NA	17,132	685	722	(37)	-5.12%	
Frede, Ralph	16565	4028	H0084	H1260	NA	15,945	638	672	(34)	-5.06%	
Morgan, Jeanette	40804	4028	H0086	H2903	NA	14,971	599	615	(16)	-2.60%	
Shaw, Betty	16560	4028	H0090	H1248	NA	14,865	595	626	(31)	-4.95%	
Nikolaidi, Elena	14019	4028	H0090	H1014	NA	14,504	580	611	(31)	-5.07%	
Fiesta Mart Endow-MAS	42230	4042	H0095	D9987	NA	14,119	565	351	214	60.97%	
Jones, Benjamin Scott	40232	4028	H0123	H9573	NA	13,890	556	545	11	2.02%	
Blaffer, Sarah Cambell Schol	16382	4028	H0083	H1655	NA	13,215	529	557	(28)	-5.03%	
George & Kathryn Martinez End	48302	4042	H0095	D9657	NA	12,779	511	453	58	12.80%	
Robert J. Jones Endow	16743	4028	H0090	H1324	NA	11,781	471	488	(17)	-3.48%	
Torres, Rosemary Segovia Scholarship	40808	4028	H0087	H2904	NA	10,693	428	-	428	NA	
Smith, June Duhar Schol. Quasi	31608	4028	H0090	H9675	NA	10,613	425	447	(22)	-4.92%	
Social Sciences Alumni Quasi	16539	4028	H0120	H1480	NA	10,005	400	422	(22)	-5.21%	
Texas German Studies	40314	4042	H0092	D3710	NA	9,236	369	387	(18)	-4.65%	
Georgeanna Stanton	40212	4028	H0084	H1264	NA	9,000	360	-	360	NA	
Johnson, Harvey L.	41754	4028	H0504	H1532	NA	6,936	277	287	(10)	-3.48%	
Scardino, Dickie	16379	4028	H0084	H1647	NA	6,579	263	276	(13)	-4.71%	
Flaherty, Pat	13056	4028	H0084	H1651	NA	5,783	231	244	(13)	-5.33%	
Love, John W.	10839	4028	H0125	H0792	NA	4,977	199	210	(11)	-5.24%	
Underwood, Walter Quasi	16378	4028	H0084	H1645	NA	2,884	115	122	(7)	-5.74%	
Smith, Beulah Lavange Quasi	17298	4042	H0086	D1285	NA	43,800	-	1,787	(1,787)	NA	
Inprint Fund for the Creative Writing Program	49829	4042	H0086	D8298	NA	933,562	-	17,552	(17,552)	NA	
Richard L. Nelson Excellence Writing Award End	44808	4028	H0086	H9991	NA	15,193	-	399	(399)	NA	
Cullen Foundation Chair in Creative Writing	49097	4042	H0086	A8270	NA	1,704,866	-	32,387	(32,387)	NA	
Thelma Burnett Maresh	48309	4042	H0087	D9691	NA	25,622	-	1,045	(1,045)	NA	
Pollack, Howard Scholarship	30994	4028	H0090	H9666	NA	42,413	-	1,579	(1,579)	NA	
Druary, John Scholarship	36226	4028	H0090	H9767	NA	23,878	-	856	(856)	NA	
Fraga Brothers	28032	4028	H0095	H9617	NA	35,325	-	1,435	(1,435)	NA	
Maresh, Thelma Burnett Schol.	30288	4028	H0095	H9653	NA	133,544	-	3,430	(3,430)	NA	
Bob Perry Mexican American Studies Endow	48300	4042	H0095	D9664	NA	344,546	-	13,976	(13,976)	NA	
Palacios Ctr for Mexican Amer Studies	48307	4042	H0095	D9674	NA	15,066	-	615	(615)	NA	
Miguel & Ana Loya	48306	4042	H0095	D9686	NA	15,595	-	633	(633)	NA	
Mexican Women's Initiative End	40236	4042	H0095	D9877	NA	24,399	-	636	(636)	NA	
Amegy Bank of Texas Endowment	40237	4042	H0095	D9908	NA	12,432	-	439	(439)	NA	
Robinson, Minette & Jerome	36873	4028	H0097	H9621	NA	31,278	-	1,276	(1,276)	NA	
Shearne, Major Charles PES	10325	4028	H0123	H2479	NA	173,005	-	4,530	(4,530)	NA	
Anthony P. Apollo Memorial Scholarship Endowment (2)	47206	6045	H0650	H8172	NA	28,036	1,121	-	1,121	NA	
<b>Allocations (UH &amp; UHSA):</b>											
Joseph S. & Rosella H. Werlin Memorial Scholarship Endowment		4028	H0126	H1695	NA	85,883	500	500	-	0.00%	
Joseph S. & Rosella H. Werlin Memorial Scholarship Endowment		4042	H0126	D1501	NA		2,935	3,096	(161)	-5.20%	
Prudential		4028	H0086	H1028	NA		1,565	1,672	(107)	-6.40%	
Gordon, Aron Scholarship		4028	H0090	H1232	NA		2,926	3,125	(199)	-6.40%	
Mitchell Endowment		4027	H0082	H0846	NA		40,000	40,000	-	0.00%	
Roy & Lillie Cullen End		5022	H0089	A0001	G0004545		15,879	16,966	(1,087)	-6.40%	
<b>SUBTOTAL COLLEGE OF LIBERAL ARTS &amp; SOCIAL SCIENCES</b>						<b>60,670,402</b>	<b>1,254,224</b>	<b>1,310,043</b>	<b>(55,819)</b>		
Gehbauer, John & Kathryn (1)	13062	4028	H0084	H1224	NA	53,226	2,129	2,138	(9)	-0.42%	
Strane, Miriam (1)	42055	4028	H0090	H9614	NA	8,538	342	342	-	0.00%	
Turner, Sylvester (1)	20827	6045	H0650	H9205	NA	29,312	1,172	1,180	(8)	-0.68%	
<b>SUBTOTAL COLLEGE OF LIBERAL ARTS &amp; SOCIAL SCIENCES</b>							<b>3,643</b>	<b>3,660</b>	<b>(17)</b>		
<b>TOTAL COLLEGE OF LIBERAL ARTS &amp; SOCIAL SCIENCES</b>							<b>1,257,867</b>	<b>1,313,703</b>	<b>(55,836)</b>		
Houston Livestock	16623	4028	H0104	H1394	NA	288,707	11,548	12,089	(541)	NA	
Gordon, H & B.Davis	40839	4028	H0102	H1412	NA	153,084	6,123	6,542	(419)	NA	
Benner, Charles	16773	4028	H0110	H0788	NA	135,765	5,431	5,306	125	NA	
Grover, Blanche	40848	4028	H0110	H0984	NA	121,856	4,874	4,676	198	NA	
Natural Sciences Quasi	16968	4028	H0102	H0727	NA	98,600	3,944	4,214	(270)	NA	
NSM Alumni	16707	4028	H0102	H1406	NA	66,608	2,664	-	2,664	NA	
UH GAA	40846	4028	H0109	H0908	NA	64,000	2,560	2,735	(175)	7.04%	
Milton Dobrin Quasi Endow	40845	4028	H0109	H0458	NA	47,362	1,894	2,024	(130)	-5.08%	
Huggins, Sara	16624	4028	H0104	H1398	NA	21,572	863	909	(46)	-5.06%	

(1) Income Return to Principal.  
(2) Income cost center not yet available.

University of Houston System											
Estimated FY12 Endowment Income											
For FY2013 Budget Development											
PEOPLE SOFT						3 Year					
INCOME COST CENTER						Average	Est. FY12	FY11	FY12 - FY11		
	Sp Type	Fund	Dept	Prog	Proj	Market Value	Income	Actual Income	Income Change	%	
Perkin Elmer Corp.	16708	4028	H0102	H1410	NA	15,907	636	670	(34)	-4.47%	
Margaret & Robert Sheriff Seismology Chair	48315	4042	H0109	A9050	NA	377,504	15,100	16,133	(1,033)	-6.41%	
Cullen (Math)	40847	4042	H0110	D3106	NA	155,566	6,223	6,648	(425)	-5.07%	
Cullen (Chem)	40274	4042	H0107	D3707	NA	154,898	6,196	6,620	(424)	-6.40%	
Cullen (Phy)	40849	4042	H0112	D3107	NA	154,898	6,196	6,620	(424)	NA	
Jack & Betty Cannata Endow	17340	4042	H0102	D1323	NA	127,351	5,094	5,366	(272)	NA	
Margaret S. Sheriff Geophysics Term End	44069	4042	H0102	A8073	NA	110,610	4,424	4,177	247	NA	
Robert E. Sheriff Sequence Stratigraphy Term End	44070	4042	H0102	A8074	NA	110,610	4,424	4,177	247	NA	
NSM-Chemistry Quasi	40273	4042	H0107	D3706	NA	96,500	3,860	4,124	(264)	NA	
Cominsky, Catherine	40844	4042	H0104	D3105	NA	39,248	1,570	1,654	(84)	-4.48%	
College of NSM Growth Fund End	43568	4042	H0102	D8049	NA	20,907	836	781	55	-6.40%	
Pheiffer, Eckhard Chair Quasi	40840	4042	H0102	A2217	NA	784,733	-	32,011	(32,011)	NA	
Irwin, Melinda	40841	4028	H0102	H2539	NA	30,711	-	1,215	(1,215)	NA	
Welch Foundation Chair	15332	5022	H0107	B0001	G003290	3,755,334	150,213	157,246	(7,033)	-5.07%	
<b>Michael Friedberg Endowed Fellowship<sup>(2)</sup></b>	<b>47256</b>	<b>6045</b>	<b>H0650</b>	<b>H8173</b>	<b>NA</b>	<b>56,071</b>	<b>2,243</b>	<b>-</b>	<b>2,243</b>	<b>5.91%</b>	
Jay K. Kochi Grad Fellowship in Chemistry Endowment	45451	4028	H0107	H8085	NA	150,176	-	3,785	(3,785)	NA	
Robert & Margaret Sheriff End/Geophysics	41079	4042	H0109	D3156	NA	128,986	-	-	-	43.88%	
Neal Amundson Dist Lecture Series Endow	48316	4042	H0110	C9983	NA	45,134	-	-	-	NA	
Greater Texas Fdn End Sch for TeachHouston	43379	4028	H0110	H2922	NA	127,322	-	-	-	-6.40%	
The Kitty King Powell Endowment for TeachHouston	47702	4042	H0110	D8188	NA	834,660	-	-	-	NA	
Fondren Foundation Endowment for TeachHouston <sup>(1)</sup>	47388	6061	H0650	D8181	NA	138,867	-	-	-	NA	
Elizabeth P. & Harold R. Williams Fdn End for teachHouston <sup>(2)</sup>	47970	6045	H0650	H8228	NA	110,967	-	-	-	NA	
Earth & Atmospheric Sci Field Camp Experimental Learning End <sup>(2)</sup>	48799	6061	H0650	D8267	NA	40,418	-	-	-	NA	
<b>SUBTOTAL NATURAL SCIENCES &amp; MATHEMATICS</b>						<b>8,925,435</b>	<b>246,916</b>	<b>289,722</b>	<b>(41,981)</b>		
<b>Teach Houston Challenge Fund Endowment<sup>(1)</sup></b>	<b>43583</b>	<b>4028</b>	<b>H0110</b>	<b>H8047</b>	<b>NA</b>	<b>57,041</b>	<b>2,282</b>	<b>1,586</b>	<b>696</b>	<b>5.91%</b>	
Leslie & Alan Ma Wong Scholarship End <sup>(1)</sup>	43874	4028	H0109	H8030	NA	10,016	401	272	129	-6.40%	
<b>SUBTOTAL NATURAL SCIENCES &amp; MATHEMATICS</b>							<b>2,683</b>	<b>1,858</b>	<b>825</b>		
<b>TOTAL NATURAL SCIENCES &amp; MATHEMATICS</b>							<b>249,599</b>	<b>291,580</b>	<b>(41,156)</b>		
Borish Chair	17237	4042	H0113	A1768	NA	757,363	30,295	32,367	(2,072)	-6.40%	
Greeman Petty Professorship	17239	4042	H0113	A1774	NA	681,475	27,259	28,511	(1,252)	-4.39%	
Coburn, O.W. Quasi	16389	4028	H0113	H1667	NA	104,589	4,184	4,470	(286)	-6.40%	
Lovitt Quasi Endow	48318	4042	H0113	D9106	NA	81,706	3,268	3,492	(224)	-6.41%	
Murphy, Mary Quasi	17235	4042	H0113	B1340	NA	81,328	3,253	3,476	(223)	-6.42%	
White, William E.	14028	4028	H0113	H0761	NA	78,375	3,135	3,236	(101)	-3.12%	
Marco, Seymour	13061	4028	H0113	H1420	NA	65,264	2,611	-	2,611	NA	
Armistead, Cora	40853	4042	H0113	D3109	NA	60,562	2,422	2,407	15	0.62%	
Dr Clinton & Dorothy DeWolfe Schol Endow	16838	4028	H0113	H0502	NA	56,803	2,272	2,270	2	0.09%	
Briggs, Charles R.	48317	4042	H0113	D8206	NA	45,733	1,829	-	1,829	NA	
Adler-Grinberg	16635	4028	H0113	H0812	NA	45,060	1,802	1,778	24	1.35%	
Thacker, Steve & Susan Schol Quasi	40201	4028	H0113	H9804	NA	41,245	1,650	1,540	110	7.14%	
Jankiewicz, Harry	14144	4028	H0113	H1659	NA	35,383	1,415	1,405	10	0.71%	
Kuhlman, William Optometry	16380	4028	H0113	H1649	NA	29,707	1,188	1,252	(64)	-5.11%	
Zipper, Robert	46046	4028	H0113	H2906	NA	22,964	919	913	6	0.66%	
Mikela D. Kwan Scholarship Endowment	43464	4028	H0113	H3702	NA	20,404	816	629	187	29.73%	
Smith-Wensveen Fellowship Endowment	45537	4028	H0113	H2655	NA	37,305	-	732	(732)	NA	
The Manny Family Fellowship Endow in Opt	46426	4028	H0113	H8141	NA	66,354	-	2,149	(2,149)	NA	
Elena Estefan Fellowship End in the College of Optometry	46454	4028	H0113	H8144	NA	55,046	-	2,145	(2,145)	NA	
<b>SUBTOTAL OPTOMETRY</b>						<b>3,112,985</b>	<b>88,318</b>	<b>92,772</b>	<b>(3,452)</b>		
UH Coll of Optometry Sch Endow <sup>(1)</sup>	40200	4028	H0113	H3486	NA	42,140	1,686	684	1,002	146.49%	
<b>TOTAL OPTOMETRY</b>							<b>90,004</b>	<b>93,456</b>	<b>(2,450)</b>		
Pharmacy	40858	4042	H0116	D3110	NA	145,021	5,801	6,198	(397)	-6.41%	
Pharmacy Golf Tour. Scholarship	40860	4028	H0116	H0904	NA	112,066	4,483	4,789	(306)	-6.39%	
Mading, Cora & Webb Scholarship	16490	4028	H0116	H1452	NA	80,425	3,217	3,437	(220)	-6.40%	
Webber, George & Cecilia	16479	4028	H0116	H1428	NA	45,279	1,811	1,933	(122)	-6.31%	
Coll of Pharmacy Dean's Advisory Council	42344	4028	H0116	H9984	NA	35,807	1,432	1,094	338	30.90%	
Buckley, Joseph P.	16480	4028	H0116	H1432	NA	34,893	1,396	1,462	(66)	-4.51%	

(1) Income Return to Principal.  
(2) Income cost center not yet available.

University of Houston System											
Estimated FY12 Endowment Income											
For FY2013 Budget Development											
PEOPLE SOFT						3 Year					
INCOME COST CENTER						Average	Est. FY12	FY11	FY12 - FY11		
	Sp	Fund	Dept	Prog	Proj	Market Value	Income	Actual Income	Income Change	%	
Doyle	13060	4028	H0116	H1430	NA	31,407	1,256	1,323	(67)	-5.06%	
Lau Family Pharmacological & Pharmaceutical Sciences End	44031	4042	H0116	D8075	NA	30,874	1,235	1,135	100	8.81%	
Leadership Passport	17275	4042	H0116	E0420	NA	28,184	1,127	1,157	(30)	-2.59%	
Ferguson, Noel	40859	4028	H0116	H0858	NA	27,567	1,103	1,161	(58)	-5.00%	
The Lau & Lau UHCop Growth Fund End	44683	4042	H0116	D8069	NA	24,020	961	866	95	10.97%	
Robert L. Boblitt	11998	4028	H0116	H1436	NA	10,766	431	446	(15)	-3.36%	
UH College of Pharmacy Dean's Executive Council	43676	4028	H0116	H8032	NA	8,652	346	327	19	5.81%	
Johnnie Fadal Endowed Scholarship	43117	4028	H0116	H8026	NA	8,493	340	227	113	49.78%	
Elena, Veronica, and Johnny Guerra Sch End	42869	4028	H0116	H8013	NA	8,437	337	224	113	50.45%	
Kenneth & Patty Korthauer Endowed Scholarship	44678	4028	H0116	H8034	NA	8,337	333	277	56	20.22%	
Alton & Sandra Kanak Endowed Scholarship	44680	4028	H0116	H8046	NA	8,033	321	278	43	15.47%	
Shara L. Zatopek Endowed Scholarship	44682	4028	H0116	H8031	NA	5,720	229	137	92	67.15%	
<b>SUBTOTAL PHARMACY</b>						<b>1,577,573</b>	<b>26,159</b>	<b>31,747</b>	<b>(4,468)</b>		
James & Theresa Fischer Sch Endowment <sup>(1)</sup>	44681	4028	H0116	H8071	NA	23,852	954	754	200	26.53%	
Corisman Excellence Presidential Endowed Fellowship <sup>(1)</sup>	44663	4028	H0116	H8095	NA	9,532	381	239	142	59.41%	
W. Benjamin Fry Rio Grande Valley Endowed Sch <sup>(1)</sup>	42754	4028	H0116	H8002	NA	8,445	338	234	104	44.44%	
Friends of Paul J. Rice Memorial Scholarship End <sup>(1)</sup>	42870	4028	H0116	H8008	NA	7,633	305	187	118	63.10%	
Advanced Pharma Inc. Presidential Endowed Fellowship <sup>(1)</sup>	47751	4028	H0116	H8170	NA	6,938	278	-	278	NA	
Micheline & Bourjois Abboud Grad Fellowship in Pharmaceutics <sup>(1)</sup>	47770	4028	H0116	H8171	NA	6,938	278	-	278	NA	
<b>SUBTOTAL PHARMACY</b>							<b>2,534</b>	<b>1,414</b>	<b>1,120</b>		
<b>TOTAL PHARMACY</b>							<b>28,693</b>	<b>33,161</b>	<b>(3,348)</b>		
Dr. Fernando J. Zuniga Y Rivero Doctoral Fellowship	45076	4028	H0129	H3773	NA	251,651	10,066	9,694	372	3.84%	
Reibenstein, Cynthia	40787	4042	H0129	D3083	NA	57,889	2,316	2,283	33	1.45%	
Keeper, Cele	17255	4042	H0129	A1848	NA	51,927	2,077	2,219	(142)	-6.40%	
David, Gerson	16598	4028	H0129	H0980	NA	33,715	1,349	1,420	(71)	-5.00%	
Stewart, Josephine	16651	4028	H0129	H1502	NA	15,998	640	674	(34)	-5.04%	
Karen Stout Faculty End Fund	40243	4042	H0129	D1785	NA	29,978	-	800	(800)	NA	
Damon Wells Foundation	40789	4042	H0439	D3111	NA	42,345	-	1,365	(1,365)	NA	
Margaret S. O'Donnell End - GCSW	42452	4042	H0439	D3757	NA	49,484	-	1,625	(1,625)	NA	
<b>SUBTOTAL GRADUATE COLLEGE OF SOCIAL WORK</b>						<b>2,016,365</b>	<b>16,448</b>	<b>20,080</b>	<b>(3,432)</b>		
DeBottis <sup>(1)</sup>	13058	4028	H0129	H2398	NA	66,167	2,647	2,447	200	8.17%	
Stewart, Josephine Quasi <sup>(1)</sup>	16651	4028	H0129	H1502	NA	1,251	50	50	-	0.00%	
<b>SUBTOTAL GRADUATE COLLEGE OF SOCIAL WORK</b>							<b>2,697</b>	<b>2,497</b>	<b>200</b>		
<b>TOTAL GRADUATE COLLEGE OF SOCIAL WORK</b>							<b>19,145</b>	<b>22,577</b>	<b>(3,232)</b>		
Gulf Coast Surveyor	14060	4028	H0136	H0844	NA	77,176	3,087	3,273	(186)	-5.68%	
Nat'l Assn of Purchasing Mgmt- Bay Area, Inc. End	40865	4042	H0137	D3112	NA	72,408	2,896	3,032	(136)	-4.49%	
Anthis-Callicutt Gore	16370	4028	H0136	H1627	NA	72,237	2,889	3,087	(198)	-6.41%	
Lofstrom, James	16818	4028	H0136	H0986	NA	37,358	1,494	1,574	(80)	-5.08%	
Curry, Herbert & Dorothy	16700	4028	H0136	H1186	NA	30,332	1,213	1,278	(65)	-5.09%	
Emerging Technology Growth Fund Endowment	43775	4042	H0136	D3915	NA	28,603	1,144	898	246	27.39%	
Nicholson, Charles	17029	4028	H0136	H0584	NA	21,829	873	920	(47)	-5.11%	
Assn of Well Head Equip Manufacturing Sch End	44558	4028	H0136	H3730	NA	20,354	814	766	48	6.27%	
Mechanical Engineering Tech Excellence Fund End	43669	4042	H0139	D3837	NA	15,086	603	322	281	87.27%	
Akin, Ted Scholarship	29359	4028	H0136	H2593	NA	12,715	509	519	(10)	-1.93%	
John Ashford Memorial Fund Endowment	44557	4042	H0139	D3974	NA	12,254	490	213	277	130.05%	
Verghese Fellowship Endowment	31723	4028	H0136	H2624	NA	11,176	447	441	6	1.36%	
Forkner, William	16653	4028	H0136	H1506	NA	8,846	354	373	(19)	-5.09%	
Anthis-Callicutt Gore Quasi	16661	4028	H0136	H1512	NA	5,889	236	244	(8)	-3.28%	
<b>Allocations (UH &amp; UHSA):</b>											
Doss, R.P.		4028	H0136	H1508	NA		680	716	(36)	-5.00%	
<b>SUBTOTAL TECHNOLOGY</b>						<b>1,207,007</b>	<b>17,729</b>	<b>17,656</b>	<b>73</b>		
Moore Library Quasi	17060	4042	H0143	D1433	NA	1,604,094	64,164	68,554	(4,390)	-6.40%	
Franzheim, Kenneth	27821	4042	H0143	D9612	NA	215,709	8,628	6,837	1,791	26.20%	
Green Book Fund	17053	4042	H0143	D1413	NA	187,700	7,508	8,022	(514)	-6.41%	

(1) Income Return to Principal.  
(2) Income cost center not yet available.



University of Houston System											
Estimated FY12 Endowment Income											
For FY2013 Budget Development											
PEOPLE SOFT						3 Year					
INCOME COST CENTER						Average	Est. FY12	FY11	FY12 - FY11	% Change	
	Sp Type	Fund	Dept	Prog	Proj	Market Value	Income	Actual Income	Income Change		
Conoco Phillips Library Fund	12208	4042	H0143	D1447	NA	171,554	6,862	7,332	(470)	-6.41%	
Science & Technical Journal	10778	4042	H0143	D1489	NA	89,688	3,588	3,833	(245)	-6.39%	
Rockwell, Eliz. Library	27550	4042	H0143	D3561	NA	81,251	3,250	3,365	(115)	-3.42%	
Shiffick, Bill & Peggy End Book Fund	17176	4042	H0143	D1455	NA	78,999	3,160	-	3,160	NA	
Barnett, Marguerite Quasi	16996	4042	H0143	D1445	NA	47,872	1,915	2,046	(131)	-6.40%	
Walker, William & Mimi Book Fund	17262	4042	H0143	D1393	NA	46,198	1,848	1,946	(98)	-5.04%	
Kochi, Jay & Marion Library	30760	4042	H0143	D9662	NA	43,310	1,732	1,576	156	9.90%	
Clarence & Dorothy Patterson Quasi	17175	4042	H0143	D1453	NA	36,512	1,460	1,538	(78)	-5.07%	
McElhinney, Charles	10703	4042	H0143	D1499	NA	34,041	1,362	1,434	(72)	-5.02%	
Johnson Book Fund	10800	4042	H0143	D1395	NA	33,720	1,349	1,421	(72)	-5.07%	
Friends of the Library	14035	4042	H0143	D1493	NA	28,512	1,140	1,121	19	1.69%	
Gee, Wallace	17050	4042	H0143	D1407	NA	26,316	1,053	1,102	(49)	-4.45%	
Jack E Wilson Endowment	46027	4042	H0143	D9855	NA	18,639	746	503	243	48.31%	
Hill, Laurita & John	16962	4042	H0143	D1495	NA	18,059	722	761	(39)	-5.12%	
Douthitt, Helen Library	16963	4042	H0143	D1497	NA	17,109	684	721	(37)	-5.13%	
Anne & Edgar Lackner Quasi Endow to support MD Anderson Lib	45888	4042	H0143	D8132	NA	16,851	674	655	19	2.90%	
Barnstone, Howard	10802	4042	H0143	D1425	NA	15,329	613	642	(29)	-4.52%	
University Libraries	17056	4042	H0143	D1423	NA	12,531	501	528	(27)	-5.11%	
HARLIC Endow MD Anderson Lib	45883	4042	H0143	D8131	NA	11,537	461	448	13	2.90%	
Phillips, Anne Reynolds	16960	4042	H0143	D1491	NA	10,802	432	455	(23)	-5.05%	
Albright, Frell	17055	4042	H0143	D1421	NA	10,489	420	439	(19)	-4.33%	
Maud & Timothy Maurin	17177	4042	H0143	D1457	NA	3,136	125	126	(1)	-0.79%	
Hagen, John L.	40374	4042	H0143	D3061	NA	8,217	-	340	(340)	NA	
El-Farouq Foundation	40376	4042	H0143	D1405	NA	50,176	-	2,047	(2,047)	NA	
M.D. Anderson Library Acorn Growth Fund End	42417	4042	H0143	D3214	NA	65,817	-	1,615	(1,615)	NA	
Kathleen O. Macnerney Library Acquisition End	43548	4042	H0143	D3825	NA	809,795	-	30,977	(30,977)	NA	
Donald & Jane McClelland Library Endowment	47126	4042	H0143	D8168	NA	13,078	-	444	(444)	NA	
<b>SUBTOTAL LIBRARY</b>						<b>6,107,857</b>	<b>114,397</b>	<b>150,933</b>	<b>(36,536)</b>		
Rockwell Foundation	48314	4042	H0232	G8222	NA	462,413	18,497	19,762	(1,265)	-6.40%	
<b>Allocations (UH &amp; UHSA):</b>											
Bohner, Roswell		4042	H0224	E9199	NA		549	579	(30)	-5.10%	
<b>SUBTOTAL STUDENT AFFAIRS</b>						<b>575,677</b>	<b>19,046</b>	<b>20,341</b>	<b>(1,295)</b>		
Residence Halls Facilities Improvement <sup>(1)</sup>	48313	4042	H0231	G9020	NA	2,473	99	99	-	0.00%	
<b>TOTAL STUDENT AFFAIRS</b>							<b>19,145</b>	<b>20,440</b>	<b>(1,295)</b>		
McCammon Molecular Design	40850	4042	H0103	D3108	NA	59,581	2,383	2,546	(163)	-6.40%	
Welch Foundation, Chemistry	15358	5022	H0239	B0001	G003016	2,421,805	96,872	101,408	(4,536)	-4.47%	
Welch Foundation	44475	5021	H0282	B0001	G098682	3,894,998	155,800	171,863	(16,063)	-9.35%	
Welch Chair in Chemistry - Grant E0044	44478	5021	H0282	B0001	G098679	1,537,279	61,491	57,356	4,135	7.21%	
TLL Temple Foundation Chair	36824	4042	H0452	A1760	NA	2,702,045	108,082	115,476	(7,394)	-6.40%	
Moore's TCSUH	36826	4042	H0452	B1388	NA	1,604,095	64,164	68,554	(4,390)	-6.40%	
Superconductivity Quasi	36825	4042	H0452	B1390	NA	3,315,596	132,624	141,697	(9,073)	-6.40%	
Cullen Trust for Higher Ed HIM Endow	36872	4042	H0452	B1392	NA	2,252,750	90,110	77,147	12,963	16.80%	
Chu, Paul C.W.	40862	4028	H0452	H1408	NA	35,737	1,429	1,506	(77)	-5.11%	
Temple - TCSUH	48890	4042	H0452	D8207	NA	333,334	13,333	14,246	(913)	-6.41%	
<b>SUBTOTAL RESEARCH</b>						<b>18,530,580</b>	<b>726,288</b>	<b>751,799</b>	<b>(25,511)</b>		
Alumni Center Quasi	40837	4042	H0261	D3104	NA	50,985	2,039	2,179	(140)	-6.42%	
<b>SUBTOTAL ADMINISTRATION &amp; FINANCE</b>						<b>50,985</b>	<b>2,039</b>	<b>2,179</b>	<b>(140)</b>		
Moore's Univ Priority						16,852,004	-	-	-	NA	
UH Core Pool Quasi Endowment	43693	2077	H0264	F3681	NA	33,868,056	-	-	-	NA	
Taylor, Josie B Quasi	40434	6003	H0278	E5089	NA	414,036	16,561	17,687	(1,126)	-6.37%	
<b>SUBTOTAL INSTITUTIONAL</b>						<b>51,134,095</b>	<b>16,561</b>	<b>17,687</b>	<b>(1,126)</b>		

(1) Income Return to Principal.  
(2) Income cost center not yet available.



University of Houston System											
Estimated FY12 Endowment Income											
For FY2013 Budget Development											
PEOPLE SOFT						3 Year					
INCOME COST CENTER						Average	Est. FY12	FY11	FY12 - FY11	%	
	Sp Type	Fund	Dept	Prog	Proj	Market Value	Income	Actual Income	Income Change	Change	
Blakely, Newell Professorship	40129	4042	H0476	A1696	NA	204,474	8,179	8,739	(560)	-6.41%	
Judge Ruby Kless Sondock Lectureship	48310	4042	H0481	C9023	NA	170,376	6,815	7,281	(466)	-6.40%	
Frankel Quasi	41356	4042	H0484	D3100	NA	69,281	2,771	2,961	(190)	-6.42%	
Garwood, W. St. John	40175	4028	H0485	H1689	NA	122,548	4,902	5,237	(335)	-6.40%	
Stevens, Barksdale	40174	4028	H0485	H1641	NA	8,732	349	368	(19)	-5.16%	
Fultz, Mr & Mrs Larry Quasi	40172	4028	H0485	H1661	NA	58,433	2,337	2,497	(160)	-6.41%	
Smith, Judge Shern	40173	4028	H0485	H1677	NA	16,890	676	712	(36)	-5.06%	
Bacon, Judge Mary	40170	4028	H0485	H1390	NA	65,684	2,627	2,679	(52)	-1.94%	
Crowther, James	40171	4028	H0485	H1392	NA	129,236	5,169	5,272	(103)	-1.95%	
William Bates Chair	41355	4042	H0493	A2215	NA	555,591	22,224	23,264	(1,040)	-4.47%	
<b>Allocations (UH &amp; UHSA):</b>											
Prudential		4028	H0485	H1012	NA		1,565	1,672	(107)	-6.40%	
<b>SUBTOTAL LAW</b>						<b>1,412,387</b>	<b>57,614</b>	<b>60,682</b>	<b>(3,068)</b>		
Prudential	ocations (See Attached)					156,514	6,261	6,689	(428)	-6.40%	
Gordon, Aron Scholarship						219,440	8,778	9,377	(599)	-6.39%	
Bohner, Roswell						27,453	1,098	1,157	(59)	-5.10%	
Doss, R.P.						34,009	1,360	1,431	(71)	-4.96%	
Dodds Family						91,544	-	-	-	NA	
<b>SUBTOTAL UH ALLOCATIONS</b>						<b>528,961</b>	<b>17,497</b>	<b>18,654</b>	<b>(1,157)</b>		
<b>TOTAL UNIVERSITY OF HOUSTON</b>						<b>312,396,565</b>	<b>6,656,950</b>	<b>7,391,612</b>	<b>(734,662)</b>		

(1) Income Return to Principal.  
(2) Income cost center not yet available.

University of Houston System										
Estimated FY12 Endowment Income										
For FY2013 Budget Development										
PEOPLE SOFT						3 Year				
INCOME COST CENTER						Average	Est. FY12	FY11	FY12 - FY11	%
	Sp Type	Fund	Dept	Prog	Proj	Market Value	Income	Actual Income	Income Change	Change
<b>SYSTEM ADMINISTRATION</b>										
Enron Teaching Award	10585	4042	S0005	D0207	NA	1,014,534	40,581	43,358	(2,777)	-6.40%
Houston Jr C Of C	13217	4042	S0005	H9557	NA	213,095	8,524	8,549	(25)	-0.29%
<b>SUBTOTAL ACADEMIC AFFAIRS</b>						<b>1,227,630</b>	<b>49,105</b>	<b>51,907</b>	<b>(2,802)</b>	
Autrey	ocations (See Attached)					414,739	16,590	17,725	(1,135)	-6.40%
Cullinan						348,726	13,949	14,903	(954)	-6.40%
Mitchell						4,375,249	175,010	177,255	(2,245)	-1.27%
International Paper						364,776	14,591	15,589	(998)	-6.40%
Cullen Leadership						1,023,858	40,954	43,756	(2,802)	-6.40%
Roy & Lillie Cullen End						44,108,921	1,764,357	1,885,067	(120,710)	-6.40%
<b>SUBTOTAL UHSA ALLOCATIONS</b>						<b>50,636,269</b>	<b>2,025,451</b>	<b>2,154,295</b>	<b>(128,844)</b>	
Marjorie Gurasich Endow	13205	4042	S0008	H0230	NA	10,383	-	-	-	NA
Baldwin, Mike	13203	4028	S0008	H0799	NA	10,277	-	419	(419)	NA
Miller, Michel Scholarship	12542	4027	S0008	H2573	NA	12,253	-	-	-	NA
System Matching	10575	4042	S0015	H0214	NA	3,226,955	129,078	133,638	(4,560)	-3.41%
Endowment Plus	10579	4045	S0015	D0203	NA	4,363,481	174,539	186,478	(11,939)	-6.40%
Farfel Lecture Series	10586	4042	S0026	F0795	NA	313,699	12,548	13,406	(858)	-6.40%
General Endowment	10589	2076	S0026	F0572	NA	23,518,210	940,728	1,004,930	(64,202)	-6.39%
Farfel Lecture Series Quasi	10586	4042	S0026	F0795	NA	70,317	2,813	3,005	(192)	-6.39%
General Purpose	10050	4042	S0026	F0788	NA	824,523	32,981	35,237	(2,256)	-6.40%
UH System Fellowship Quasi Endowment	10320	4042	S0026	D0201	NA	200,547	8,022	8,571	(549)	-6.41%
Energy Alumni Assoc. Schol.	10581	4042	S0026	H0218	NA	98,130	3,925	4,115	(190)	-4.62%
Melrose Thompson	10454	2076	S0026	F0574	NA	10,021,879	-	384,615	(384,615)	NA
UH System Quasi	10325	2076	S0026	F0555	NA	364,581	14,583	-	14,583	NA
New Century Success	10236	4042	S0026	H0228	NA	30,781	1,231	1,275	(44)	-3.45%
Enron Scholarship	10239	4042	S0026	H0222	NA	669,126	26,765	27,711	(946)	-3.41%
System Core Pool Quasi Endowment	12840	2077	S0027	F3480	NA	3,655,253	-	-	-	NA
<b>SUBTOTAL INSTITUTIONAL</b>						<b>47,390,394</b>	<b>1,347,213</b>	<b>1,803,400</b>	<b>(456,187)</b>	
<b>TOTAL SYSTEM ADMINISTRATION</b>						<b>99,254,294</b>	<b>3,421,769</b>	<b>4,009,602</b>	<b>(587,833)</b>	

(1) Income Return to Principal.  
(2) Income cost center not yet available.

**UNIVERSITY OF HOUSTON**  
**FY2013 Grants and Contract Revenue and Expenditures Budget Estimates**

***FY 2013 Projected Expenditures by Revenue Source***

	<i>FY 2011 Actual</i>	<i>FY 2012 Budget</i>	<i>FY 2013 Budget</i>	<i>FY 2013 inc./decrease</i>
Federal	\$66,473,974	\$47,000,000	56,736,987	\$9,736,987
State	\$6,234,623	\$24,000,000	15,117,312	(\$8,882,689)
Local	\$141,841	\$600,000	370,921	(\$229,080)
Private	\$12,904,077	\$17,500,000	15,202,039	(\$2,297,962)
Other	\$5,186,083	\$8,085,000	6,635,542	(\$1,449,459)
<b>Total Non-ATP/ARP Sponsored Projects</b>	<b>\$90,940,598</b>	<b>\$97,185,000</b>	<b>94,062,799</b>	<b>(\$3,122,201)</b>
<b>ATP/ARP Sponsored Projects</b>	<b>\$1,159,344</b>	<b>\$715,000</b>	<b>1,100,000</b>	<b>\$385,000</b>
<b>Total Sponsored Project Expenditures</b>	<b>\$92,099,942</b>	<b>\$97,900,000</b>	<b>95,162,799</b>	<b>(\$2,737,201)</b>

***FY 2013 Projected Expenditures by College/Division***

	<i>FY 2011 Actual</i>	<i>FY 2012 Budget</i>	<i>FY 2013 Budget</i>	<i>FY 2013 inc./decrease</i>
Administration	\$2,081,808	\$2,310,000	2,195,904	(\$114,096)
SVP and Provost	\$1,344,791	\$770,000	1,057,396	\$287,396
Vice President Research	\$302,874	\$18,370,000	9,336,437	(\$9,033,563)
Vice President Student Affairs	\$331,705	\$660,000	495,853	(\$164,148)
Architecture	\$29,309	\$44,000	36,655	(\$7,346)
Bauer College of Business	\$3,424,527	\$2,640,000	3,032,264	\$392,264
Education	\$2,504,172	\$6,600,000	4,552,086	(\$2,047,914)
Engineering	\$21,668,608	\$14,850,000	18,259,304	\$3,409,304
Honors	\$38,703	\$0	19,352	\$19,352
Hotel & Restaurant Management	\$99,615	\$11,000	55,308	\$44,308
CLASS	\$11,657,176	\$11,000,000	11,328,588	\$328,588
Law	\$324,893	\$220,000	272,447	\$52,447
Library	\$21,625	\$0	10,813	\$10,813
Natural Science & Mathematics	\$32,864,921	\$22,000,000	27,432,461	\$5,432,461
Optometry	\$4,710,644	\$6,160,000	5,435,322	(\$724,678)
Pharmacy	\$4,600,299	\$4,400,000	4,500,150	\$100,150
Social Work	\$3,004,204	\$3,850,000	3,427,102	(\$422,898)
Technology	\$1,930,724	\$3,300,000	2,615,362	(\$684,638)
<b>Total Non-ATP/ARP Sponsored Projects</b>	<b>\$90,940,598</b>	<b>\$97,185,000</b>	<b>94,062,799</b>	<b>(\$3,122,201)</b>
<b>ATP/ARP Sponsored Projects</b>	<b>\$1,159,344</b>	<b>\$715,000</b>	<b>1,100,000</b>	<b>\$385,000</b>
<b>Total Sponsored Project Expenditures</b>	<b>\$92,099,942</b>	<b>\$97,900,000</b>	<b>95,162,799</b>	<b>(\$2,737,201)</b>

FY 2013 estimates are based upon FY2011 actuals and FY 2012 estimates

**UNIVERSITY OF HOUSTON  
Division of Research**

**Indirect Cost Return - Estimated FY 2013 Return**

	<u>PS</u>	<u>Cost Center</u>	<u>FY2013</u>	
	<u>Speed Type</u>		<u>Estimate</u>	
<b>ACADEMIC AFFAIRS/PROVOST</b>				
Senior V.P. for Academic Affairs and Provost	11889	2072-H0005-B0810-NA	6,831	
Learning/Assessment Svcs	10820	2072-H0221-B0856-NA	8,500	15,331
<b>CT BAUR COLLEGE OF BUSINESS</b>				
Dean Business Administration	12060	2072-H0041-B1181-NA	14,806	
Management	17907	2072-H0048-B1187-NA	2,642	
SBDC	17913	2072-H0053-B1201-NA	32,572	50,020
<b>EDUCATION</b>				
Dean, Education	17914	2072-H0058-B1205-NA	36,000	
Institute for Urban Education	18041	2072-H0059-B1231-NA	7,081	
Educational Leadership & Cultural Studies	17917	2072-H0061-B1211-NA	-	
Curriculum and Instruction	17918	2072-H0062-B1215-NA	13,854	
Educational Psychology	17920	2072-H0064-B1219-NA	4,177	61,112
<b>ENGINEERING</b>				
Dean, Engineering	17895	2072-H0066-B0862-NA	710,896	
Biomedical Engineering	44312	2072-H0071-B3793-NA	11,821	
Center for Innovative Grouting Materials and Tech	18018	2072-H0069-B0919-NA	11,500	
Center for Integrated Nanosystems	18123	2072-H0070-B0886-NA	6,134	
Center Neuro-Engineering/Cog Sci	31649	2072-H0426-B1664-NA	11,796	
Chemical Engineering	17896	2072-H0067-B0864-NA	197,817	
Civil Engineering	18122	2072-H0068-B0882-NA	81,543	
Composites Engineering & Applications Center	18017	2072-H0077-B0917-NA	2,822	
Electrical Engineering	18123	2072-H0070-B0886-NA	192,547	
Industrial Engineering	18009	2072-H0072-B0892-NA	12,262	
Mechanical Engineering	18011	2072-H0073-B0896-NA	192,991	
Nanosystem Manufacturing Center	18123	2072-H0070-B0886-NA	340	
Natl Wind Energy Ctr	41306	2072-H0503-B3693-NA	30,773	
SW Public Safety Crt	37929	2072-H0455-B1804-NA	3,500	
Tx. Hurricane Center	43616	2072-H0512-B4450-NA	950	1,467,692
<b>HOTEL AND RESTAURANT MANAGEMENT</b>				
	17866	2072-H0081-B1165-NA	5,824	5,824
<b>LIBERAL ARTS AND SOCIAL SCIENCES</b>				
Dean, CLASS	18019	2072-H0082-B0921-NA	201,158	
Anthropology	17994	2072-H0121-B1103-NA	191	
Arte Publico Press	28519	2072-H0093-B1613-NA	236	
Blaffer Gallery	30169	2072-H0097-B1641-NA	943	
Communication Disorders	35776	2072-H0087-B4387-NA	950	
Economics	17995	2072-H0122-B1107-NA	800	
Health and Human Performance	13957	2072-H0065-B1223-NA	94,262	
History	18024	2072-H0089-B0933-NA	1,542	
Hobby Center for Public Policy	12920	2072-H0128-B1149-NA	2,100	
Political Science	17997	2072-H0124-B1111-NA	-	
Psychology	17999	2072-H0125-B1117-NA	176,079	
School of Communication	18020	2072-H0084-B0923-NA	-	
Sociology	18207	2072-H0126-B1137-NA	10,500	488,761
<b>LAW</b>				
Energy Institute	17903	2072-H0098-B1177-NA	18,000	18,000
<b>NATURAL SCIENCES AND MATHEMATICS</b>				
Dean, Natural Sciences and Mathematics	18028	2072-H0102-B0945-NA	858,738	
Biology/Biochemistry	18030	2072-H0104-B0951-NA	188,687	
CAGE	39743	2072-H0451-B1806-NA	2,400	
Chemistry	14002	2072-H0107-B0991-NA	150,195	
CNRSC	43613	2072-H0515-B3766-NA	89,355	
Computer Science	18071	2072-H0108-B1011-NA	205,618	
Geosciences	18078	2072-H0109-B1023-NA	139,274	
IMAQS	31882	2072-H0429-B1667-NA	37,814	
Institute for Molecular Biology	18194	2072-H0104-B1059-NA	-	
Mathematics	18083	2072-H0110-B1031-NA	88,630	
Physics	18187	2072-H0112-B1041-NA	122,981	1,883,692
<b>OPTOMETRY</b>				
	17864	2072-H0113-B1161-NA	494,432	494,432

**UNIVERSITY OF HOUSTON  
Division of Research**

**Indirect Cost Return - Estimated FY 2013 Return**

	<b>PS</b>	<b>FY2013</b>	
<b>PHARMACY</b>			
Dean, Pharmacy	12065 2072-H0116-B1067-NA	178,665	
Pharmacological and Pharmaceutical Sciences	18198 2072-H0117-B1069-NA	141,346	
Heart/Kidney Institute	18201 2072-H0117-B1079-NA	77,424	
Clinical Sciences and Administration	18210 2072-H0118-B1097-NA	22,806	
CETP	41115 2072-H0117-B2202-NA	8,800	
Inst. Community Health	41073 2072-H0501-B1844-NA	1,800	
Institute for Drug Education/Research	32619 2072-H0422-B1621-NA	1,090	431,931
<b>SOCIAL WORK</b>			
	10692 2072-H0129-B1169-NA	134,465	
CFIR	43450 2072-H0509-B1171-NA	33,310	
CHEER	48442 2072-H0662-B1171-NA	288	
DSPR	43463 2072-H0508-B1171-NA	69,829	237,892
<b>ARCHITECTURE</b>			
	17901 2072-H0024-B1173-NA	-	-
<b>TECHNOLOGY</b>			
	17859 2072-H0136-B1151-NA	64,977	
CLST	43588 2072-H0468-B4430-NA	1,552	
TMAC	32617 2072-H0281-B1676-NA	1,500	
ILT	32559 2072-H0137-B1673-NA	552	
Engineering Technology	32555 2072-H0139-B1674-NA	16,371	
Human Development/Consumer Sci	32557 2072-H0140-B1675-NA	288	
Center for Technology Literacy	46882 2072-H0423-B2732-NA	33,967	
Abramson Center	40515 2072-H0469-B1792-NA	1,307	120,514
<b>STUDENT AFFAIRS</b>			
Vice President, Student Affairs	17892 2072-H0205-B0854-NA	7,900	
Learning Support Services	10820 2072-H0221-B0856-NA	-	7,900
<b>DIVISION OF RESEARCH</b>			
VP-Research	18094 2072-H0233-B0818-NA	167,721	
CAM	36385 2072-H0453-B1730-NA	40,296	
CBEG	45612 2072-H0546-B3838-NA	62,923	
CMC	10819 2072-H0248-B0850-NA	-	
Biology of Behavior Inst	46572 2072-H0552-B2720-NA	8,200	
CNBR5	44342 2072-H0521-B3794-NA	9,685	
Houston Coastal Center	47017 2072-H0271-B4473-NA	3,200	
Institute for Molecular Design	18197 2072-H0103-B1065-NA	12,254	
Institute for Nanoenergy	45491 2072-H0545-B3797-NA	13,172	
Institute for Space Systems Operations	11894 2072-H0244-B0844-NA	2,208	
Space Vacuum Epitaxy Center	36385 2072-H0453-B1730-NA	-	
TcSUH	36896 2072-H0452-B0848-NA	135,608	
TIMES	34116 2072-H0288-B1691-NA	215,960	
TLCC	18096 2072-H0246-B0822-NA	147,217	
TORC	42126 2072-H0500-B4422-NA	1,200	819,644
<b>VP Research 23% Adjusted Amount</b>		<b>1,844,014</b>	1,844,014
<b>TOTAL DISTRIBUTION</b>		<b>7,946,759</b>	<b>7,946,759</b>
<b>IDC Retained for Administrative Priorities</b>		<b>6,820,000</b>	
<b>IDC Retained by Provost Office</b>		<b>1,238,909</b>	
<b>TOTAL IDC RECOVERY</b>		<b>16,005,668</b>	

**University of Houston**  
**FY2013 - Allocation of Student Service Fees**

Sources	FY2012 Budget	-----Change-----		FY2013 Budget
		Dollars	Percent	
Current Year Revenue	\$ 15,759,049	\$ 4,337,793	27.5%	\$ 20,096,842
Budgeted Fund Balance	632,869	(195,480)	-30.9%	437,389
<b>Total Sources</b>	<b>\$ 16,391,918</b>	<b>\$ 4,142,313</b>	<b>25.3%</b>	<b>\$ 20,534,231</b>

**Allocations**

Academic Achievers - Ctr. Mexican-Am. Studies *	\$ 62,923	\$ -		\$ 62,923
Activities Funding Board (AFB)	139,205	5,592	4.0%	144,797
A.D. Bruce Religion Center	34,991	89,691	256.3%	124,682
Band Program	211,400			211,400
Blaffer Art Gallery	20,000			20,000
Campus Recreation	566,332	13,366	2.4%	579,698
Center for Leadership & Fraternity and Sorority Life	277,448	2,150	0.8%	279,598
Center for Students w/Disabilities	400,632	30,674	7.7%	431,306
Center for Student Involvement	622,325	18,909	3.0%	641,234
Child Care Center	116,417	27,794	23.9%	144,211
Coog Radio		9,000	na	9,000
Counseling and Psychological Services	1,306,444	47,098	3.6%	1,353,542
Council of Ethnic Organizations (CEO)	107,733	45,525	42.3%	153,258
Dean of Students **	932,031	11,676	1.3%	943,707
Forensics Society	238,263	(55,845)	-23.4%	182,418
Frontier Fiesta Association	151,808	19,141	12.6%	170,949
Homecoming	62,163	9,974	16.0%	72,137
Intercollegiate Athletics	4,407,707			4,407,707
Intercollegiate Athletics - Stadium		3,375,000	na	3,375,000
Learning and Assessment	68,089	4,095	6.0%	72,184
Learning Support Services	527,720	16,590	3.1%	544,310
Metropolitan Volunteer Program	44,915	25,365	56.5%	70,280
Student Government Association	128,471	13,928	10.8%	142,399
Student Program Board	225,910	33,726	14.9%	259,636
Student Publications	241,066	(10,499)	-4.4%	230,567
Student Video Network	108,077	(34,963)	-32.4%	73,114
University Career Services	907,691	20,000	2.2%	927,691
University Center	1,395,341	34,657	2.5%	1,429,998
University Health Center	1,838,510	10,490	0.6%	1,849,000
Urban Experience Program	104,422	29,336	28.1%	133,758
Veterans' Services	139,851	11,411	8.2%	151,262
VPSA		533,746	na	533,746
VPSA Business Office	116,797	(116,797)	-100.0%	-
Wellness Center	221,236	65,493	29.6%	286,729
SFAC Operating	6,000			6,000.00
Administrative Charge Increase	200,000	(200,000)	-100.0%	-
Budgeted Reserve	460,000	55,990	12.2%	515,990
<b>Total Allocations</b>	<b>\$ 16,391,918</b>	<b>\$ 4,142,313</b>	<b>25.3%</b>	<b>\$ 20,534,231</b>

\* Formerly, "Urban Experience Program - Ctr. Mexican-American Studies"

\*\* Combination of DOS Handbook, Success Programs, Ombudservice, and Student Legal--formerly separate, now one allocation.

**UNIVERSITY OF HOUSTON  
FY2013 Plan and Budget**

**Contact List**

<u>Name, Position Title</u>	<u>Extension</u>	<u>Email Address</u>
		<b><u>Budget Office</u></b>
Margie Hattenbach, Director	3-0655	<a href="mailto:MHattenbach@uh.edu">MHattenbach@uh.edu</a>
Karen James, DBA	3-0665	<a href="mailto:KJames@central.uh.edu">KJames@central.uh.edu</a>
Shabana Mohiuddin, Supervisor	3-0656	<a href="mailto:SRMohiudoin@Central.uh.edu">SRMohiudoin@Central.uh.edu</a>
Linda Watkins, Analyst	3-5336	<a href="mailto:LWatkins@uh.edu">LWatkins@uh.edu</a>
Miranda McMorris, Analyst	3-5331	<a href="mailto:MMcMorris@central.uh.edu">MMcMorris@central.uh.edu</a>
Mayra Rodriguez, Analyst	3-0651	<a href="mailto:merodriguez6@uh.edu">merodriguez6@uh.edu</a>

**Finance**

Tom Ehardt, Assoc VC/VP Finance	3-5325	<a href="mailto:TEhardt@uh.edu">TEhardt@uh.edu</a>
------------------------------------	--------	--

**Planning and Institutional Effectiveness**

Ed Hugetz, Assoc VC/VP Planning/University Outreach	3-3419	<a href="mailto:EHugetz@uh.edu">EHugetz@uh.edu</a>
Chris Stanich, Executive Director Planning/Special Asst Governmental Relations	3-3232	<a href="mailto:CStanich@uh.edu">CStanich@uh.edu</a>

**Academic and Faculty Affairs**

John J. Antel, Sr VC/VP, Provost	3-9101	<a href="mailto:jantel@central.uh.edu">jantel@central.uh.edu</a>
----------------------------------	--------	--

**Sr. VC/VP, Academic Affairs, Provost**

Craig Ness, Asst VP Academic Operations	3-9106	<a href="mailto:CNess@uh.edu">CNess@uh.edu</a>
--	--------	--

**Academic Budget & Operations**

Sabrina Hassumani, Executive Director of Academic Budgets & Administration	3-9106	<a href="mailto:shassuma@central.uh.edu">shassuma@central.uh.edu</a>
---	--------	--

**Human Resources**

Joan Nelson, Executive Director	3-2603	<a href="mailto:jmnelson@central.uh.edu">jmnelson@central.uh.edu</a>
---------------------------------	--------	--